



Video Surveillance

2012



FOR A GOOD **REASON**
GRUNDIG



German video security excellence - by Grundig

Grundig, the German electronics manufacturer, successfully re-entered the CCTV market in 2010 with an impressive and well-received new product range.

2012 sees Grundig add HD-SDI CCTV cameras, DVRs and speed domes, LED backlight monitors and IP speed domes to this comprehensive range, taking Grundig to the forefront of the industry.

Grundig HD-SDI CCTV cameras and HD-SDI speed domes use full HD technology with 1080p progressive scan, 1980 x 1080 pixel resolution and 50 / 60 frames per second (fps). The HD-SDI DVRs support 120 fps in HD resolution and, with a recording extension facility, offer up to 64 TB of storage.

The Grundig IP speed domes are designed for easy set-up and configuration. The highly reliable LED backlight monitors have a Mean Time Before Failure (MTBF) life of up to 100,000 hours - double that of CCFL monitors. This means they need replacing less frequently. They also use around 35% less power than CCFL monitors, reducing running costs.

Product quality and user-friendly design are central to all Grundig's products. They are intuitive, offer outstanding image quality and have impressive data storage capacities.

German video security excellence - by Grundig.

For further information visit www.grundig-cctv.com

Table of Contents

Grundig Video Surveillance 2012

I. HD-SDI	4
HD-SDI Cameras	8
HD-SDI Recorder	10
HD-SDI Transmission	12
II. IP Technology	14
IP Box Cameras	18
IP Fixed Dome Cameras	20
Accessories Anti-Vandal Domes	22
IP Bullet Camera	24
IP Motor Dome Cameras	26
IP Video Encoder	28
IP Transmission Accessories	30
III. Analogue DSP Cameras	32
Analogue Internal Fixed Dome	38
Analogue Vandal-Resistant Fixed Dome	42
Analogue Vandal-Resistant Pixim Dome	46
Analogue Outdoor Bullet with IR	48
Analogue Motor Dome Cameras	50
IV. Grundig Analogue DVR	52
Analogue DVR	54
V. Monitors	56
Monitors	60
Monitor Accessories	62
VI. Accessories	64
Notes	72



HD-SDI

Grundig is amongst the first security manufacturers to offer a complete HD-SDI product range.

HD-SDI enables the transmission of uncompressed digital video, in real time, over coaxial cable and delivers a significantly higher image quality than IP. Although it is a high-quality digital video solution, it benefits from very simple analogue-style installation and support.

HD-SDI technology - Combine the best of CCTV & IP Surveillance

The SDI standard was developed for the broadcast industry by the SMPTE (Society of Motion Picture and Television Engineers). The SDI standard defines the serial digital transmission of uncompressed video data. Initially, it was developed as a digital replacement for analogue television and cinematic applications and it has been used for many years. It has now been adopted by the security industry for the transmission of 2 megapixel, full HD video.

Although the SDI standard is not restricted to a specific cabling method, the broadcast industry mostly uses coaxial cabling. Conveniently, this makes SDI even more applicable to the security industry.

SDI has many advantages over existing PAL or NTSC analogue technologies. SDI technology uses a digital signal throughout the system. By comparison, analogue systems require the digital camera signal to be converted to analogue for transmission and converted back to digital for the monitor to process. At every conversion, errors in colour accuracy and de-interlacing (if progressive scan is not used) occur, reducing image quality.

An analogue signal comprises amplitude, frequency and modulation data. After transmission, this data must be decoded to produce an image. HD-SDI is a digital signal comprising only "1" and "0" data. Like IP technology, a digital signal of this type is either transmitted correctly, or not at all. No data corruption or image degradation can occur.

HD-SDI and analogue transmission distances are similar. However, HD-SDI can transmit significantly more data as uncompressed HD video.

Like analogue technology, SDI uses direct, point-to-point connections, between the cameras and DVRs. IP systems, by comparison, require cameras and DVRs to connect to a network. Although IP systems are usually easy to set-up, in-depth IT knowledge is often required to secure the network itself.

HD-SDI is a plug and play solution.



2 Megapixel 16:9 HD-SDI Camera



400.000 Pixel 4:3 Analogue Camera

HD-SDI takes video surveillance to a whole new level. It combines higher image quality than IP, with the installation and support simplicity of analogue.

Megapixel video

HD-SDI video is transmitted at 1080p (progressive scan), 2 megapixel resolution of 1980 x 1080 pixels with a data rate of up to 1.485 gigabits per second. This is considerably higher than analogue-based D1 resolution which is 720 x 576 pixels and IP-based, 1.3 megapixels resolution which is 1280 x 1024 pixels.

All cameras within an HD-SDI system are connected directly to the DVR. Even when transmitting uncompressed, 2 megapixel resolution video, in real-time (25 / 30 fps) there is no transmission delay between the camera and the monitor. All cameras within the system can be recorded at their full HD, uncompressed rate, simultaneously. IP systems, by comparison, can have transmission delays resulting in blocking and image artifacts. This is due to network bandwidth limitations. This will even occur in IP systems when a dedicated security network is used and multiple cameras are attempting to transmit at once.

Safe and secure

HD-SDI systems are connected point-to-point, not over a network. Firewalls and other network protection hardware are not necessary to ensure the safe running and operation of the system, as it is intrinsically safe.

Stored data is also secure. Preventing physical access to the recording system stops data being accessed or viewed.



IP-cameras in public areas might be a security risk for your network. An HD-SDI camera isn't!



HD-SDI signals can be transmitted over standard coax cable.

Plug & play

Coaxial cabling is used to transmit HD-SDI signals, just like analogue systems. No network configuration or IT knowledge are necessary to set up a system. The DVR will detect the video signals from the cameras automatically and will record the data immediately.

Existing analogue coaxial cabling can be re-used for HD-SDI systems, saving on installation and cabling costs.

Compatibility

HD-SDI products are based on existing television and broadcast standards. All products that meet these standards are compatible with Grundig HD-SDI systems, without needing further integration.

As part of the HD CCTV Alliance, Grundig is contributing to the development of the HD-SDI standard within the video surveillance industry. Further developments include increasing transmission distances, increasing transmission resolutions and implementing features such as serial communication and power over coaxial cable – all of which will be included in the standard.

Unlike ONVIF, which has been developed specifically for IP security applications, the SDI standard already exists. It is simply evolving and adapting to suit video surveillance applications.



The HD-CCTV alliance makes sure all products work together.

HD-SDI Cameras



Highlights

2 megapixel full HD real-time (50/60fps) over coax	GCH-K0305B
2 Megapixel Full HD Realtime PTZ camera with 18x optical Zoom	GCH-K0274P

Key features and benefits

- Video enhancement technologies Wide Dynamic Range (WDR), Digital Noise Reduction (DNR), Back Light Compensation (BLC)
- Day & Night cameras with removable IR cut filter
- Privacy Mask function (16 zones)
- Analogue video out for fast & easy installation (GCH-K0305B)
- Extended tilt range -10° ~ 190° to see over horizontal (GCH-K0274P)
- Easy PTZ control with automatic P/T speed adjustment according to zoom ratio (GCH-K0274P)
- Presets, sequence, auto-pan and cruise function (GCH-K0274P)

Order information

Item code	Brief description
GCH-K0305B	2 megapixel full HD CMOS SDI box camera
GCH-K0274P	2 megapixel full HD outdoor SDI motor dome with 18x zoom

	GCH-K0305B	GCH-K0274P
Image Sensor:	1/2.8" Progressive Scan CMOS, 3 Megapixels	
Pixels - Total:	2144(H) x 1588(V), 3.40M pixels	
Pixels - Effective:	2080(H) x 1553(V), 3.23M pixels	
Scanning System:	Progressive	
Image Size:	1920x1080, 1280x720	
Frame Rate:	30/60, 25/50 fps at 1080p; 30/60, 25/50 fps at 720p	30, 25 fps at 1080p; 60, 50 fps at 720p
Sensitivity:	0.2 lux at F1.2, 30 IRE	0.3 lux (Colour) / 0.04 lux (B/W) at F1.6, 30 IRE
Video Outputs:	1 Ch HD-SDI BNC or 1 Ch Composite BNC	1 Ch HD-SDI BNC
Focal Length:	-	4.7 ~ 84.6 mm
Lens Mount:	C/CS mount	-
Zoom Ratio:	-	x 18
Lens Drive Type:	Auto Iris (DC)	
Focus Operation:	-	Auto, Manual
Iris Operation:	-	Auto, Manual
Number of Privacy Zones:	16	
High Speed Shutter:	1/30 fps ~ 1/10,000 sec	
Col/B&W:	On/Off/Auto	
Shutter Mode:	Auto / Fix / Iris / Manual	
BLC:	On/Off	
Digital Noise Reduction (DNR):	On/Off	
Presets:	-	256
Pan Speed:	-	Manual: 0.5°/s ~ 90°/s, Preset: 400°/s (max.)
Tilt Speed:	-	Manual: 0.5°/s ~ 90°/s, Preset: 400°/s (max.)
Range Panning:	-	360° endless
PTZ Control:	-	Pan & Tilt speed proportional to Zoom ratio (On/Off)
PTZ Control:	-	Auto PAN, Preset, Sequence and Cruise Function Support
Tilt Range:	-	-10° ~ 190°
White Balance:	Auto, Manual, Indoor, Outdoor, ATW	
Alarm Inputs:	-	4
Alarm Outputs:	-	2
Serial Interface(s):	-	RS-485 (In/Out)
Protocol:	-	Pelco D, Pelco P
AGC:	Auto, Manual	
Protection Rating:	-	IP66
Operating Temperature:	-10°C ~ +50°C	-40°C ~ +50°C
Humidity:	10 ~ 90% no condensation	
Supply Voltage:	12 VDC/24 VAC	24 VAC
Power Consumption:	5 W	65 W
Dimensions:	82 x 52 x 125 mm	Ø 193.36 x 282.41 mm
Weight:	0.33 kg	2.4 kg

HD-SDI Recorder



Highlights

Supports up to an incredible 64TB of storage with the GDS-R04A	GRH-K1004A, GRH-K2108A
4 channel full HD 60fps recording capability (120fps live)	GRH-K1004A
8 channel full HD 120fps recording capability (240fps live)	GRH-K2108A

Key features and benefits

- Create a hybrid system using Grundig Control Center software and the GDV series
- RAID level 1 support
- Advanced user Management (incl. channel covering)
- Comprehensive search functions (time, calendar, event, thumbnail, motion area)
- Live view access by Smart Phones
- Support all popular web Browser (ActiveX/Java) for remote access
- Alarm notifications via email, Twitter, FTP, relay or buzzer
- French law compliant (August 2007)

Order information

Item code	Brief description
GRH-K1004A	4 channel H.264 HD-SDI recorder with DVD-RW drive and 1TB HDD
GRH-K2108A	8 channel H.264 HD-SDI recorder with DVD-RW drive and 1TB HDD

	GRH-K1004A	GRH-K2108A
Operating System:	Embedded OS	
Video Inputs:	4 CH HD-SDI, BNC	8 CH HD-SDI, BNC
Video Standard:	SMPTE-292/296M	
Video Outputs:	1 VGA, 1 HDMI	
Basic Internal Storage:	1 TB	
Storage Max. Expansion:	16TB (intern or eSATA), 64 TB (GDS-R04A)	
Video Compression:	H.264, JPEG	
Recording Resolution:	FullHD (1920x1080), HD(1280x720)	
Recording Speed:	60fps (FullHD), 120fps (HD)	120fps (FullHD), 240fps (HD)
Recording Mode:	Continuous, Event Alarm, Motion, Video Loss, Schedule, Manual	
Display Resolution:	max. 1920 x 1080	
Display Speed:	120 fps	240 fps
Auto Switching:	0, 3, 5, 10, 20, 30 sec, Alarm Pop Up or Manual, Multi Channel Views	
Internal Backup:	Built in DVD-RW drive	
External Backup:	USB HDD, USB Memory, DVD-R, Network, eSATA	
Search Mode:	Date/Time, Event Alarm (Motion, Video Loss,...), Thumbnail	
Motion Detection:	On/ Off/ Area Setting	
Event Source:	Motion, Alarm, Text, Video Loss, System	
Event Action:	Pop-Up, Relay, E-Mail, FTP, Twitter, Network, Buzzer, PTZ Preset	
Audio Inputs:	4 CH, RCA	
Audio Outputs:	1 CH, RCA	
Alarm Inputs:	4 contact input N/O or N/C	8 contact input N/O or N/C
Alarm Outputs:	4 Relay	
Compliant:	SMPTE-292/296M	
Interfaces:	2 port RS485, 1 port RS232, 1 NAS, 1 Ethernet and 2 USB 2.0 ports	
ATM/POS:	Supports up to 16 ATM/POS with VSI-Pro Hydra Modules	
Time Setting:	Setting by NTP Server local or internet	
Video Streaming:	Versatile Triple Streaming (Dual H.264 + single JPEG)	
Multiplex Function:	Pentaplex	
Network:	Ethernet, 10/100 Base-T for PC client, 1000 Base-T for storage, ADSL Static IP, ADSL Dynamic IP(PPPoE),Cable Network (Dynamic IP)	
Client software:	Windows (XP, Vista, 7), Web Viewer: IE, Firefox, Safari, Chrome; Mobile: iPhone (OS4), Blackberry, Android, Windows Mobile, Symbian	
Operating Temperature:	5°C ~ 40°C	
Storage Temperature:	5°C ~ 40°C	
Humidity:	less than 93%	
Supply Voltage:	110 ~ 240 VAC/50Hz	
Power Consumption:	75 W	
Dimensions:	445 x 88 x 418 mm	
Weight:	8.9 kg	

Grundig reserves the right to change specifications without notice

www.grundig-cctv.com

www.grundig-cctv.com

HD-SDI Transmission



Highlights

GTH-K0011E

Transmits an HD-SDI signal up to 1km (cascade 4 devices & RG6 cable)

GTH-K0010M

Connects a full HD monitor directly to an HD-SDI camera

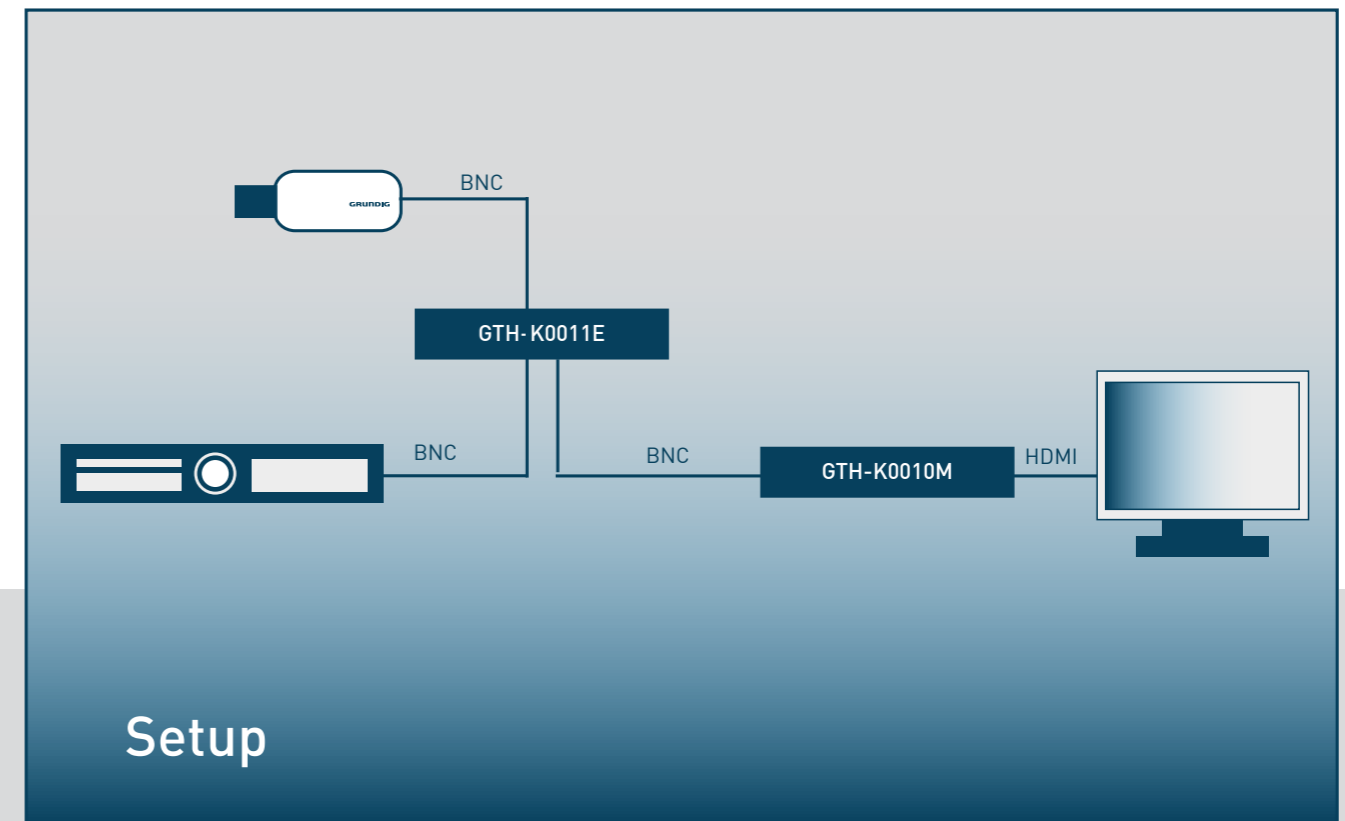
Key features and benefits

GTH-K0011E

- 1 Ch repeater & 2 Ch Distributor
- Full HD, 1920x1080p, 25/30 fps
- Automatic Re-clocking and equalisation

GTH-K0010M

- HD-SDI to HDMI converter
- Full HD, 1920x1080p, 25/30 fps



Setup

Specifications	GTH-K0011E	GTH-K0010M
Video Inputs:	1 CH HD-SDI, BNC	
Video Outputs:	2 CH HD-SDI, BNC	1 HDMI
Video Resolution:	1920 x 1080 (30/25 fps), 1280 X 720 (30/25 fps)	
Max. Distance:	up to 140m (RG59), up to 200m (RG6)	15m (HDMI)
LED Indicator:	Power, Link	
Compliant:	SMPTE-292/296M	
Operating Temperature:	0°C ~ +50°C	
Humidity:	less than 90%	
Supply Voltage:	12 VDC (External Power Supply)	
Power Consumption:	3 W	4 W
Dimensions:	91.06 x 26 x 64.3 mm	113 x 26x 65 mm
Weight:	0,12 kg	

Order information

Item code	Brief description
GTH-K0010M	1 channel HD-SDI to HDMI converter
GTH-K0011E	1 channel repeater & 2 channel distributor



IP technology

greatly increases the effectiveness of video surveillance systems.

Grundig has embraced this new technology, incorporating it into an extensive IP CCTV camera range. This new range includes PTZ and anti-vandal domes, for internal and external applications, a traditional box camera and a specialist, compact camera. Each Grundig IP camera has impressive functionality, meeting stringent surveillance requirements.

Outstanding image quality

Grundig network cameras offer outstanding image quality, even when rapid scene movement occurs. They offer a choice of 720 pixel HD and 1080 pixel full HD with 25 fps in 16:9 format.



1080P Full HD High Resolution Image

Standard Resolution Image

Ease of installation and set up

Grundig IP network cameras are designed for quick and simple installation. Most models are IP and analogue compatible, allowing simple integration into most existing surveillance systems. Their network connection also enables remote software upgrades when new developments and enhancements occur. Grundig IP cameras are compatible with the internationally recognized Open Network Video Interface Forum (ONVIF) standard.

Grundig's set up software allows the operator to check and adjust camera network settings, using a single, on-screen menu page. This eliminates the need for time consuming and complicated camera configuration. Camera configuration profiles can also be copied from one camera to another, within a system, making set up fast and efficient. Time, date and camera ID data can be transmitted as part of the image data file for display in playback mode. This can be essential for evidential purposes in some applications.

System security and safety

Grundig network cameras contain built-in security features for comprehensive data and network protection. In addition to a Login, the cameras provide several security features for authorised user access. These include image transmission protection options and the ability to create certified access levels to specific cameras and data stored within a system. Each camera contains a Micro SD memory card, with no external access.



Grundig network cameras include a wide range of incident detection tools like motion detection, alarm input and tamper alarm. When an incident occurs, the cameras record to the system DVRs, initiate the transfer of emails, http notifications and FTP uploads or activate the camera's alarm output.

Mobile phone access with DynDNS server

A DynDNS server allows designated users to access, view, monitor and control Grundig IP cameras from anywhere in the world, at any time. The images can be viewed via a web-enabled standard mobile phone or Smart Phone. Users are also immediately alerted to any alarms, enabling them to react quickly, wherever they are.

High temperature capability

Grundig network cameras are designed and built to generate very little excess heat. As a result, they will operate perfectly well in areas of constant high temperature, such as direct sunlight.

Grundig camera integration list

Grundig cameras are compatible with most leading suppliers' video management systems (VMS). They also include the ONVIF standard interface, should a particular VMS not yet be integrated.

For further information on compatibility and integration, please visit www.grundig-cctv.com.

IP Box Cameras



Highlights

Cost-effective professional camera with metal casing	GCI-H0602B
High sensitive CCD sensor for lower light situations	GCI-H0503B
2 megapixel 1080p real-time (25fps)	GCI-K0503B
Exceptional 5 megapixel resolution	GCI-G0509B

Key features and benefits

- ONVIF compatible megapixel cameras
- Dual video stream H.264, MJPEG, MPEG4, BNC at 25fps
- Micro SD/SDHC memory card slot for alarm and scheduled recording
- Power options 12VDC, 24VAC or PoE
- Bi-directional audio support
- Supports all popular web browsers for remote access (ActiveX/Quicktime)
- ICR (Infrared cut filter removable = true colour at sunlight, IR sensitive at night)

Order information

Item code	Brief description
GCI-H0503B	1.3 megapixel HD CCD IP box camera with ICR, WDR and low light capability
GCI-H0602B	2 megapixel full HD CMOS IP box camera with software day/night
GCI-K0503B	2 megapixel full HD CMOS IP box camera with ICR
GCI-G0509B	5 megapixel full HD CMOS IP box camera with ICR and WDR

	GCI-H0503B	GCI-H0602B	GCI-K0503B	GCI-G0509B
Image Sensor:	1/3" Sony Progressive CCD, 1.3 megapixel	1/2.7" CMOS Omnivision, 2 Megapixel		1/3.2" CMOS Omnivision, 5 Megapixel
Co/B&W:	On/Off/Auto, IR-cut filter removable (ICR)	Auto/Electronic	On/Off/Auto, IR-cut filter removable (ICR)	
Pixels - Total:	1280 (H) x 960 (V)	1920(H) x 1080(V)		2592 (H) x 1944 (V)
Sensitivity Colour:	0.05 Lux@F1.2 (IRE50)	--	0.5 Lux@F1.2 (IRE50)	
Sensitivity B&W:	0.005 Lux@F1.2 (IRE50)	--	0.1 Lux@F1.2 (IRE50)	
Lens Mount:	C/CS mount			
Lens Drive Type:	Auto Iris (DC)			
Motion Detection:	On/ Off/ Sensitivity/ Area setting			
Privacy zones:	5 zones, rectangle	2 zones, rectangle	5 zones, rectangle	
Back light compensation/ wide dynamic range:	On/Off	--	On/Off	
White Balance:	Auto, Indoor, Outdoor, Manual	ATW, AWB, Manual		Auto, Manual
Camera ID:	20 character			
Digital Noise Reduction (DNR):	On/Off	--	On/Off	
Shutter Speed:	1 sec to 1/10,000 sec			
Alarm Inputs:	1			
Alarm Outputs:	1			
Number of Clients:	Up to 20 users			
Web Browser:	MS Internet Explorer 6.0 (or higher), Firefox, Google Chrome, Safari			
Video Resolution:	Dual Stream: 1280 x 960 (12,5fps); 1280 x 960 (12,5fps) Dual Stream: 1280 x 960 (12 fps), 1280 x 720 (25 fps) Dual Stream: 1280 x 720 (25fps), 1280 x 720 (25fps)	Single Stream: 1920 x 1080 (12fps), Dual Stream: 1280 X 720 (25 fps); 1280 x 720 (25fps) "	Single Stream: 2592X1944 (10fps), 2048X1536 (20fps) Dual Stream: 1080p (25fps) + D1 (25fps)	
Video Compression:	Dual stream: H.264+H.264, H.264+MJPEG, MJPEG+BNC, H.264+BNC or MJPEG+MPEG-4	Dual stream: H.264+H.264, H.264+MJPEG, MJPEG+BNC or H.264+BNC	Single stream: MJPEG or H.264 Dual stream: H.264+H.264, H.264+MJPEG, MJPEG+BNC or H.264+BNC	Single stream: H.264 Dual stream: H.264+H.264, H.264+MJPEG, MJPEG+BNC or H.264+BNC
SD memory:	Supports up to 32GB capacity of micro SD/SDHC memory			
Network Protocol:	IPv4, IPv6, TCP/IP, UDP, RTP, RTSP, HTTP, HTTPS, ICMP, FTP, SMTP, DHCP, PPPoE, UPnP, IGMP, 802.1X and SNMP			
Alarm Event:	Alarm Input, Motion Detection or Schedule: Image transfer or alarm message by FTP, Image transfer or alarm message by E-mail, recording on SD-card, enabling alarm output			
Audio Compression:	G.726 ADPCM, G.711			
LED Indicator:	Power, link, active			
Input/Output sockets:	Power(3-Pin Term), RJ-45, Micro SD Card Slot, Alarm Terminal 4-Pin (Alarm In 2-Pin, Alarm Out 2-Pin), Audio (2 mini Jack 3.5mm), Auto-Iris (4Pin)	Power(DC Jack), RJ-45, Micro SD Card Slot, Alarm Terminal 4-Pin (Alarm In 2-Pin, Alarm Out 2-Pin), Audio (2 mini Jack 3.5mm)	Power(3-Pin Term), RJ-45, Micro SD Card Slot, Alarm Terminal 4-Pin (Alarm In 2-Pin, Alarm Out 2-Pin), Audio (2 mini Jack 3.5mm)	
Video Outputs:	1 CVBS 1 Vpp (BNC)			
Firmware Upgrade:	Firmware upgrade by Web Browser			
Configuration:	Upload & Download configuration on remote PC			
Regulation:	CE, FCC, RoHS Compliant			
Operating Temperature:	0°C ~ +50°C			
Humidity:	10 ~ 90% no condensation			
Supply Voltage:	12 VDC / 24 VAC / PoE IEEE 802.3af	12 VDC / PoE IEEE 802.3af	12 VDC / 24 VAC / PoE IEEE 802.3af	12 VDC / PoE IEEE 802.3af

Grundig reserves the right to change specifications without notice

www.grundig-cctv.com

IP Fixed Dome Cameras



Highlights

Extra wide viewing angle for indoor applications	GCI-H0522V
23 IR LEDs with PoE and brightness control	GCI-K0322V
Quick and simple installation with pre-focused lens	GCI-K0512W

Key features and benefits GCI-H0522V & GCI-K0322V:

- Vandal-proof IP cameras (IK10 + IP66 rated)
- 3 axis gimble for ceiling and wall-mount
- CVBS-out for quick and simple installation
- Dual video stream H.264, MJPEG, BNC with 25 fps
- Micro SD/SDHC memory card slot for alarm and scheduled recording
- Power inputs 12VDC, 24VAC, PoE and bi-directional audio support

Key features and benefits GCI-K0512W:

- Compact and discreet
- Rugged IK04 and IP66 rated
- Dual video stream H.264, MJPEG up to 25 fps
- Micro SD/SDHC memory card slot for alarm and scheduled recording

Order information

Item code	Brief description
GCI-H0522V	2 megapixel full HD IP dome camera with 2.7-9mm varifocal lens and software day/night
GCI-K0322V	2 megapixel full HD IP dome camera with 2.8-12mm varifocal lens, ICR and 23 LED IR
GCI-K0512W	2 megapixel full HD flat fixed IP dome camera with 4mm lens and software day/night

	GCI-K0322V	GCI-H0522V	GCI-K0512W
Image Sensor:	1/2.5" CMOS Aptina, 2 Megapixel	1/2.7" CMOS Omnivision, 2 Megapixel	
Pixels - Total:	1920(H) x 1080(V)		
Co/B&W:	On/Off/Auto, IR-cut filter removable (ICR)	On/Off/Auto, electronically	On/Off/Auto, IR-cut filter removable (ICR)
Sensitivity Colour:	0.5 Lux@F1.4 (IRE50)	0.5 Lux@F1.2 (IRE50)	0.6 lux @ F1.6 (IRE50)
Sensitivity B&W:	0.1 Lux@F1.4 (IRE50)	--	
Lens Drive Type:	Auto Iris (DC)		--
Lens Focal Length:	3.3 ~ 12 mm	2,7 ~ 9 mm	4 mm
Viewing Angle:	71° ~ 21°	103.5° ~ 34.3°	78°
IR LED	23 pcs., 71° beaming angle	--	
Max. IR Distance:	15/25 m (according to scene reflexion)	--	
Motion Detection:	On/ Off/ Sensitivity/ Area setting		
Privacy zones:	2 zones, rectangle		
White Balance:	ATW, AWB, Manual		
Shutter Speed:	1 sec to 1/10,000 sec		
Camera ID:	20 character		
Alarm Inputs:	1	--	
Alarm Outputs:	1	--	
Web Browser:	MS Internet Explorer 6.0 (or higher), Firefox, Google Chrome, Safari		
Number of Clients:	Up to 20 users		
Video Resolution:	Single Stream: 1920 x 1080 (25fps), 1280 x 1024 (25fps) Dual Stream: 1280 X 720 (25 fps); 1280 x 720 (25fps)		
Video Compression:	Single stream: MJPEG or H.264 Dual stream: H.264+H.264, H.264+MJPEG, MJPEG+BNC or H.264 + BNC		Single stream: MJPEG or H.264 Dual stream: H.264+H.264, 264+MJPEG,
Network Protocol:	IPv4, IPv6, TCP/IP, UDP, RTP, RTSP, HTTP, HTTPS, ICMP, FTP, SMTP, DHCP, PPPoE, UPnP, IGMP, 802.1X and SNMP		
SD memory:	supports up to 32 GB capacity of micro SD/SDHC memory		
Alarm Event:	Alarm Input, Motion Detection or Schedule: Image transfer or alarm message by FTP, Image transfer or alarm message by E-mail, recording on SD-card, enabling alarm output and sending HTTP notification		Motion Detection: Image transfer or alarm message by FTP, Image transfer or alarm message by E-mail, recording on SD-card, and sending HTTP notification
Audio Compression:	G.726 ADPCM, G.711		--
LED Indicator:	Power, link, active		--
Video Outputs:	1 CVBS 1 Vpp (BNC)		--
Input/Output sockets:	Video Out(BNC), Power(3-Pin Term), RJ-45, Micro SD Card Slot, Alarm Terminal 4-Pin (Alarm In 2-Pin, Alarm Out 2-Pin), Audio (4-Pin)		RJ-45, Micro SD Card Slot
Firmware Upgrade:	Firmware upgrade by Web Browser		
Configuration:	Upload & Download configuration on remote PC		
Protection Rating:	IP66		
Operating Temperature:	-10°C ~ +50°C		-20°C ~ +50°C
Humidity:	10 ~ 90% no condensation		
Supply Voltage:	12 VDC / 24 VAC / PoE IEEE 802.3af		PoE IEEE 802.3af
Power consumption:	8.9 (LED on) W	5,5 W	
Weight:	0.8 kg		0.18 kg
Dimensions (W*H*D):	Ø 156 x 203 mm	Ø 151 x 131 mm	Ø 110x 50 mm

Grundig reserves the right to change specifications without notice

www.grundig-cctv.com

www.grundig-cctv.com

Accessories

Anti-Vandal

Domes

External housing for vandal-resistant IP dome camera

Article	GHO-M018
Compatible with	GCI-H0522V, GCI-K0322V
Material	Metal case, synthetic sunshield
Dimensions	Ø170 x 106 mm
Weight	1kg



Smoked bubble cover for vandal-resistant IP dome camera

Article	GBR-VC02S
Compatible with	GCI-H0522V, GCI-K0322V
Material	polycarbonate
Dimensions	Ø110 x 60 mm
Weight	0,056 kg



Corner mount adapter for vandal-resistant IP dome camera

Article	GBR-CM02
Compatible with	GCI-H0522V, GCI-K0322V
Material	Metal case, synthetic sunshield
Dimensions	Ø170 x 106 mm
Weight	1kg



Flush-mount adapter for vandal-resistant IP dome camera

Article	GBR-IC02
Compatible with	GCI-H0522V, GCI-K0322V
Material	Metal case, synthetic sunshield
Dimensions	Ø170 x 106 mm
Weight	1kg



Order information

Item code	Brief description
GHO-M018	External housing for vandal-resistant IP dome camera
GBR-CM02	Flush-mount adapter for vandal-resistant IP dome camera
GBR-IC02	Flush-mount adapter for vandal-resistant IP dome camera
GBR-VC02S	Smoked bubble cover for vandal-resistant IP dome camera

IP Bullet Camera



Highlights

All-in-one wide dynamic range external bullet camera Dual video stream: 1080p 25fps + D1 25fps	GCI-K0589T
With motorised varifocal lens, zoom and focus	
All in one external bullet camera Single video stream: 1080p 25fps	GCI-K0523T

Key features and benefits

- Day/night camera with 1080p real-time video at 25fps
- 23 IR LEDs with PoE and brightness control
- Dual video stream H.264, MJPEG, BNC at 25fps
- CVBS out for quick and simple installation
- Micro SD/SDHC memory card slot for alarm and scheduled recording
- Power inputs 12VDC, 24VAC and PoE
- Bi-directional audio support

Order information

Item code	Brief description
GCI-K0589T	2 megapixel full HD CMOS IP bullet camera, ICR, 23 IR LEDs and motorised varifocal lens, WDR
GCI-K0523T	2 megapixel full HD CMOS IP bullet camera, ICR and 23 IR LEDs

	GCI-K0523T	GCI-K0589T
Image Sensor:	1/2.7" CMOS Omnivision, 2 Megapixel	
CoI/B&W:	On/Off/Auto, IR-cut filter removable (ICR)	
Pixels - Total:	1920(H) x 1080(V)	
Sensitivity Colour:	0.5 Lux@F1.4 (IRE50)	0.5 lux @ F1.2 (IRE 50)
Sensitivity B&W:	0.1 Lux@F1.4 (IRE50)	0.05 lux @ F1.2 (IRE 50)
Focal Length:	3.3 - 12 mm	3 - 9 mm
Lens Drive Type:	DC auto iris, manual iris	motorized Zoom & Focus, DC Auto Iris
IR LED:	23 pcs., 71° beaming angle	
Max. IR Distance:	15/25 m (according to scene reflexion)	
Motion Detection:	On/ Off/ Sensitivity/ Area setting	
Camera ID:	20 character	
White Balance:	ATW, Manual	
Shutter Speed:	1 sec to 1/10,000 sec	
Back light compensation wide dynamic range:	--	On/Off
Alarm Inputs:	1	
Alarm Outputs:	1	
Web Browser:	MS Internet Explorer 6.0 (or higher), Firefox, Google Chrome, Safari	
Number of Clients:	Up to 20 users	
Video Compression:	Single Stream: H.264 or MJPEG Dual stream: H.264+H.264, H.264+MJPEG, MJPEG+BNC or H.264+BNC	Dual stream: H.264+H.264, H.264+MJPEG, MJPEG+BNC or H.264+BNC
Video Resolution:	1920 x 1080 (25 fps), 1280 X 720 (2x25 fps)	1920 x 1080 (25 fps) + 720x576 (25fps), 1920 X 1080(2 x 13 fps)
Network Protocol:	IPv4/v6, TCP/IP, UDP, RTP, RTSP, HTTP, HTTPS, DHCP, PPPoE, UPnP, SMTP, ICMP, IGMP, SNMP, IEEE802.1x, QoS, ONVIF, FTP	
SD memory:	supports up to 32 GB capacity of micro SD/SDHC memory	
Alarm Event:	"Alarm Input, Motion Detection, Tampering: Alarm Out by http, FTP, E-mail, recording on Micro SD-card"	
Audio Compression:	G.726 ADPCM, AAC	
Video Outputs:	1 CVBS, 1Vpp, BNC	
Firmware Upgrade:	Firmware upgrade by Web Browser	
Configuration:	Upload & Download configuration on remote PC	
Input/Output sockets:	Power(3-Pin Term), RJ-45, Micro SD Card Slot, Alarm Terminal 4-Pin (Alarm In 2-Pin, Alarm Out 2-Pin), Audio (2 mini Jack 3.5mm)	
Video Outputs:	1 CVBS 1 Vpp (BNC)	
Protection Rating:	IP66	
Operating Temperature:	-20°C ~ +50°C	
Humidity:	10 - 90% no condensation	
Supply Voltage:	12 VDC / 24 VAC / PoE IEEE 802.3af	
Power consumption:	8.9 (LED on) W	12 (LED on) W
Weight:	1 kg	
Dimensions (W*H*D):	Ø 84 x 287 mm	

Grundig reserves the right to change specifications without notice

www.grundig-cctv.com

www.grundig-cctv.com

IP Motor Dome Cameras



Highlights

1080p real-time full HD video at 25fps with 18x AF optical zoom lens	GCI-K0779P & GCI-K1779P
Quick and simple installation with combined PoE+ and network video connection	
Cost-effective IP PTZ camera with D1 resolution	GCI-C0735P & GCI-C0745P

Key features and benefits

- Video enhancement technologies: Wide Dynamic Range (WDR), Digital Noise Reduction (DNR) and Back Light Compensation (BLC)
- Day/night with removable IR cut filter (supporting IR lighting)
- Extended tilt range -10° ~ 190° to see over horizontal
- Privacy mask (16 zones)
- Dual video stream H.264, MJPEG, BNC at 25fps
- Micro SD/SDHC memory card slot for recording
- Bi-directional audio support

Order information

Item code	Brief description
GCI-C0735P	D1 internal IP motor dome with 12x optical zoom, ICR and WDR
GCI-C0745P	D1 external IP motor dome with 36x optical zoom, ICR and WDR
GCI-K0779P	2 megapixel full HD internal IP motor dome with 18x optical zoom, ICR and WDR
GCI-K1779P	2 Megapixel Full HD Outdoor Motorised Dome IP-Camera 18x Zoom ICR WDR

	GCI-C0735P	GCI-C0745P	GCI-K0779P	GCI-K1779P
Image Sensor	1/4" CCD (Sony ExView HAD)	1/4" CCD (Super HAD2 CCD)	1/2.8" Sony Progressive CMOS	
CoI/B&W:	On/Off/Auto, IR-cut filter removable (ICR)			
Pixels - Total:	795 x 596		1920 (H) x 1080 (V)	
Sensitivity colour:	0.1 lux		0.3 lux	
Sensitivity B&W:	0.01 lux		0.04 lux	
S/N Ratio:	50 dB		--	
Resolution:	650(H) lines		--	
BLC:	On/Off + WDR			
White Balance:	Auto, Manual, Indoor, Outdoor, ATW			
Shutter Speed:	1 sec to 1/10,000 sec		1/30 to 1/10,000 sec	
Camera ID:	20 character			
Number of Privacy Zones:	16			
Pan Speed:	Manual: 1°/s ~ 80°/s, Preset: 400°/s (max.)			
Tilt Speed:	Manual: 1°/s ~ 80°/s, Preset: 400°/s (max.)		Manual: 0.5°/s ~ 90°/s, Preset: 400°/s (max.)	
Range Panning:	360° endless			
Range Tilting:	-10° ~ 190°			
Number of Preset:	256			
Number of Pattern:	8			
Lens Drive Type:	Auto Iris (DC)			
Focal Length:	3.8 ~ 45.6 mm	3.4 ~ 122.4 mm	4.7 ~ 84.6 mm	
Zoom Ratio:	x 12	x 36	x 18	
Digital Zoom:	Off/1 ~ 12x		--	
OSD:	German, English, French, Italian, Russian			
Video Outputs:	1Vpp, BNC		--	
Alarm Inputs:	4			
Alarm Outputs:	1			
Web Browser:	MS Internet Explorer 6.0 (or higher), Firefox, Google Chrome, Safari			
Video Compression:	Dual stream: H.264+H.264, H.264+MJPEG			
Video Resolution	720x576 (2x25fps), 352x288 (2x25fps)		1920 x 1080p (25fps) + 720x576 (25fps)	
Network Protocol	Pv4/v6, TCP/IP, UDP, RTP, RTSP, HTTP, HTTPS, DHCP, PPPoE, UPnP, SMTP, ICMP, IGMP, SNMP, IEEE802.1x, QoS, ONVIF, FTP			
SD memory	supports up to 32 GB capacity of micro SD/SDHC memory			
Alarm Event:	Alarm Input, Motion Detection or Schedule: Image transfer or alarm message by FTP, Image transfer or alarm message by E-mail, recording on SD-card and enable alarm output			
Audio Compression	G.726 ADPCM, G.711		G.711/G.726 ADPCM/AAC	
Firmware Upgrade:	Firmware upgrade by Web Browser			
Protection Rating:	--	IP66	--	IP66
Operating Temperature:	0°C ~ +40°C	-40°C ~ +50°C	0°C ~ +40°C	-40°C ~ +50°C
Humidity:	10 ~ 90% no condensation			
Supply Voltage:	24 VAC		24 VAC / PoE+ (IEEE802.3at)	
Power consumption:	18 W	65 W (w/heater)	20 W	65 W (w/heater)
Weight:	1.2 kg	2.6 kg	1.62 kg	2.32 kg
Dimension (W*H*D):	Ø 156 x 203 mm	Ø 190 x 303 mm	Ø 172 x 229 mm	Ø 192 x 283 mm

Grundig reserves the right to change specifications without notice

www.grundig-cctv.com

www.grundig-cctv.com

IP Video Encoder



Highlights

Power analogue cameras using PoE (12VDC/500mA) - a one cable solution **GEC-D2201AR**

Key features and benefits

- Single channel video encoder - D1 dual video stream at 25fps
- RS485 interface for PTZ telemetry control
- Power inputs 12VDC or PoE
- Micro SD/SDHC memory card slot for recording on the device
- Bi-directional audio support

	GEC-D2201AR
Video Inputs:	1 CH Composite, BNC
Video Outputs:	1 CVBS, 1Vpp, BNC
Audio Inputs:	1x 3.5mm jack
Audio Outputs:	1x 3.5mm jack
Network:	10/100 Base-T
Client OS:	MS Windows XP / VISTA / 7 / Mac OS
Web Browser:	MS Internet Explorer 6.0 (or higher), Firefox, Google Chrome, Safari
Video Compression:	H.264, MJPEG
Video Resolution:	D1 (720x576), CIF (352x288)
Alarm Inputs:	1
Alarm Outputs:	1
Alarm Event:	Alarm Input, Motion Detection: Image transfer FTP, E-mail, recording on Micro SD-card *
Network Protocol:	TCP/UDP/IP, HTTP, FTP, SMTP, ARP, ICMP, DHCP, Telnet, RTP/RTSP
Network Streaming:	Dual H.264, simultaneously H.264+MJPEG
Audio Compression:	G.726, G.711
Serial Interface(s):	RS-485 (Pelco-D/P)
Power out:	12 VDC/500mA (for camera support)
PTZ Control:	Pan/Tilt/Zoom/Focus, Camera OSD
Software Upgrade:	Firmware Upgrade by Web Browser
Configuration:	Upload & Download configuration on remote PC
Login Access Level:	up to 20 user, 1 Administrator
Recording:	Micro SD memory slot for internal recording *
DDNS:	Supporting Public DDNS servers *
Operating Temperature:	-10°C ~ +50°C
Humidity:	10 ~ 90% no condensation
Supply Voltage:	12 VDC / PoE
Power consumption:	4,2 W
Weight:	0,2 kg
Dimension (W*H*D):	137 x 99 x 28 mm

Grundig reserves the right to change specifications without notice

Order information

Item code	Brief description
GEC-D2201AR	Single channel video / audio encoder with D1 dual H.264/MJPEG video stream

IP Transmission Accessories

Ethernet transmission VDSL2 over coaxial cable (pair)

Article	GTI-F0022C
Compatible with	Coaxialcable
Material	Metal case
Colour	black
Dimensions	75 x 23 x 102 mm
Weight	0.23 kg



LAN & Power over Ethernet extender

Article	GTI-F0811E
Compatible with	PoE IEEE802.af Products, 4x cascadable
Material	Metal case
Colour	black
Dimensions	130 x 24 x 77 mm
Weight	0.23 kg



Ethernet transmission VDSL2 over telephone cable (pair)

Article	GTI-F0025N
Compatible with	UTP & telephonecable
Material	Metal case
Colour	Black
Dimensions	75 x 23 x 102 mm
Weight	0.23 kg



Media converter 10/100 BaseTX FX MM ST

Article	GTI-F1026F
Compatible with	Multi-mode cable with ST plug (max.2Km)
Material	Metal case
Colour	black
Dimensions	74 x 22 x 102 mm
Weight	0.23 kg



High-power Gigabit Ethernet injector IEEE802

Article	GAX-P9830A
Compatible with	UTP & Telephone
Material	Metal case
Colour	Black
Dimensions	75 x 23 x 102 mm
Weight	0.19 kg



Order information

Item code	Brief description
GTI-F0022C	Ethernet transmission (VDSL2) over coaxial cable (pair)
GTI-F0025N	Ethernet transmission (VDSL2) over telephone cable (pair)
GAX-P9830A	High-Power Gigabit Ethernet injector IEEE802.a
GTI-F0811E	PoE extender IEEE802.af, 2W/100m, cascadable
GTI-F1026F	10/100 baseTX to 100 baseFX media converter (ST, MM, 2km)



Analogue DSP Cameras High quality, reliable and effective.

Grundig analogue cameras have been designed and built to the highest standards. Grundig has selected components which deliver outstanding image quality, including the very best image sensors, lenses and digital signal processors (DSPs). The cameras have been designed for up-to-date surveillance applications, incorporating functionality such as extended dynamic range, motion, adaptive digital noise reduction, intelligent video analytics and more.

Grundig analogue cameras have many unique features. A variety of camera casing options, ensure they suit a wide range of applications.



Grundig's objective

Grundig provides high quality, user-friendly products that offer excellent value for money. These brand values are reflected across the analogue camera range.

Superior image quality

Grundig uses premium components within its cameras to produce superior image quality. All analogue cameras include high quality optical lenses, sophisticated DSPs (digital signal processors) and reliable image sensors. Grundig analogue cameras have a minimum resolution of 600TVL and work exceptionally well in low light conditions.

Digital image enhancement

Grundig DSP cameras utilise the very latest digital image enhancement technology.

Digital Noise Reduction (DNR)

A 2D DNR filter reduces noise in low light parts of an image. An adaptive 3D DNR filter increases image clarity, where movement occurs.

Back Light Compensation (BLC)

The BLC feature balances the dynamic range in the light and dark areas of the image and is used for high-contrast and back light scenes.



WDR off



WDR on

Wide Dynamic Range (WDR)

The WDR image sensor improves image quality in difficult surveillance settings. It will enhance facial recognition performance and reduce back light effects.

Digital Image Stabilization (DIS)

If cameras are mounted on poles, bridges and buildings where vibrations or shaking may occur, DIS will eliminate the negative effect this may have on image clarity.

Grundig Pixim cameras

Grundig incorporates Pixim technology within its camera range. The Pixim chip-set offers the best Wide Dynamic Range performance available and is ideal for low-light applications, due to its superior Signal-to-Noise ratio.



The data from each pixel in a Pixim chip-set is processed separately and optimised for its individual lighting conditions. Pixim technology provides clear, crisp images with accurate colour reproduction. Faults such as "blooming" and dazzling are eliminated.

Pixim cameras are ideal for use with intelligent video analysis systems, such as license plate or facial recognition. The image detail remains consistent, irrespective of lighting conditions, which is ideal for image analysis software.

Grundig outdoor cameras – any place, anywhere

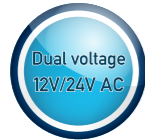
Grundig cameras are designed with ease of use and simple installation in mind. They can be configured quickly, using remote access and set-up and include test monitor outputs.

Grundig outdoor cameras are robust and using an optional, built-in fan/heater, operate at temperatures between - 50°C to + 50°C.

Privacy Masking can be used to restrict views of private areas within a scene, ensuring compliance with privacy laws and regulations. Outdoor mounting options include surface, pendant, false-ceiling, flush and wedge mount.

Grundig IR cameras offer an intelligent IR power regulation feature. Depending on the shutter speed IR LED intensity is adjusted to suit close or distant surveillance, ensuring close views are not saturated or over-exposed by the IR lighting.

Analogue Internal Fixed Dome



Highlights

Internal dome camera with excellent price-performance	GCA-B3323D
True day/night internal camera with IR LEDs	GCA-B3326D

Key features and benefits

- Cost-effective, high quality internal dome camera
- High resolution - up to 700 TV Lines
- Video enhancement feature including Digital Noise Reduction, back light compensation and high light compensation
- High quality varifocal lens for easy installation

Order information

Item code	Brief description
GCA-B3323D	1/3" CCD fixed dome with 2.8-10.5 mm varifocal lens and software day/night
GCA-B3326D	1/3" CCD fixed dome with 2.8-10.5 mm varifocal lens, ICR, WDR and 24 IR LEDs

	GCA-B3322D	GCA-B3326D
Image Sensor:	1/3" CCD Sony 960H Ex-view HAD II	
Scanning System:	PAL, 50Hz, 625L (V), 2:1 Inter Line Transfer	
Pixels - Effective:	976(H) x 582(V)	
Resolution:	650 (H) lines colour	650 (H) lines colour, 700 (H) lines b&w
CoI/B&W:	Auto (Electrical) / Color / B/W	Auto, IR-Cut Filter movable (ICR)
Sensitivity Colour:	0.1 Lux (50IRE) @ F1.2	
Sensitivity B&W:	0.01 lux (50IRE) @ F1.2	0 Lux LED IR on
S/N Ratio:	>52dB (AGC off)	
Lens Drive Type:	DC Auto Iris	
Lens Focal Length:	2.8 - 10.5 mm	
Number of Privacy Zones:	4	
High Speed Shutter:	1/50 - 1/10.000 sec, auto	
BLC:	BLC / HLC / off	
AGC:	Off, On (x0.25/x0.5/x0.75/x1)	
Digital Noise Reduction (DNR):	Off, On 2D	
Additional Features:	H Reverse, High Light Compensation	
Motion Detection:	On/Off	
OSD:	Yes (DE,EN,ES,FR,RU,PT)	
Camera ID:	52 character, 2 lines	
White Balance:	ATW/PUSH/Anti CR/Manual/User 1/User 2	
IR LED:	-	24 pcs.
Optical Wavelength:	-	850 nm
Max. IR Distance:	-	15/25 m (according to scene reflection)
Video Outputs:	1 CVBS 1 Vpp (BNC) & 1 test monitor out	
Humidity:	less than 90%	
Operating Temperature:	-10°C ~ +50°C	
Supply Voltage:	12 VDC/24 VAC	
Power Consumption:	1.7W	1.7W (4.1W LED on)
Dimensions:	Ø 122 x 95 mm	
Weight:	0.32 kg	0,5 kg

Grundig reserves the right to change specifications without notice

Analogue Internal Fixed Dome



Highlights

Cost-effective professional fixed dome camera	GCA-B1322D
Extra wide viewing angle for indoor applications	GCA-B0322D
True day/night WDR dome camera with ICR and 24 IR LEDs	GCA-B0326D

Key features and benefits

- High quality Tamron lens
- Video enhancement functions including Digital Noise Reduction, back light compensation and data item specification
- 8 polygon shaped privacy zones
- Remote control for quick and simple installation
- Certified for German Banks (UWV Kassen)

Order information

Item code	Brief description
GCA-B0322D	1/3" CCD fixed dome with 2.5~6mm varifocal lens and software day/night
GCA-B1322D	1/3" CCD fixed dome with 2.8~10.5mm varifocal lens, ICR and 24 LEDs
GCA-B0323D	1/3" CCD fixed dome with 2.8~10.5mm varifocal lens, ICR and WDR
GCA-B0325D	1/3" CCD fixed dome with 2.8~10.5mm varifocal lens, ICR, WDR and 24 LEDs
GCA-B0326D	1/3" CCD fixed dome with 2.8~10.5mm varifocal lens and software day/night

	GCA-B0322D	GCA-B1322D	GCA-B0323D	GCA-B0325D	GCA-B0326D
Image Sensor:	1/3" CCD (Sony Super HAD IT)			1/3" CCD (Sony PS Super HAD with WDR)	
Digital Signal Processor:	Motion Adaptive Digital Noise Reduction (DNR), On Screen Menu (OSD), Digital Image Stabilisation (DIS) control over coax and Privacy Zones				
Scanning System:	PAL, 50Hz, 625L (V), 2:1 Inter Line Transfer				
Image Size:	Pixel Total: 795 x 596, Pixel Effective: 752 x 582				
Resolution:	600 (H) lines		600 (H) lines colour, 640 (H) lines b&w		
CoI/B&W:	Auto (Electrical) / Color / B/W		On/Off/Auto, IR-cut filter removable (ICR)		
Sensitivity Colour:	0.4 Lux(50IRE) @ F1.2, 0.001 Lux (15IRE, Sens up x256)		0.4 Lux(50IRE) 0.001 Lux (15IRE, sense up x256)		
Sensitivity B&W:	-		0 Lux LED IR on	0,04 Lux (50 IRE), 0,00004 Lux (15 IRE, Samsung x 256)	0 Lux LED IR on
S/N Ratio:	52 dB				
Lens Drive Type:	Auto Iris (DC)				
Lens Focal Length:	2.4 - 6 mm (TAMRON)		2.8 - 10.5 mm (TAMRON)		
Sens Up:	Off - x256, auto				
Motion Detection:	On/ Off/ Sensitivity/ Area setting				
Number of Privacy Zones:	8 (polygonal method)				
High Speed Shutter:	1/50 - 1/10.000 sec, auto				
AGC:	Off/ On (Very LOW/ LOW/ Mid /High /Very High/ User/ Fix)				
Wide Dynamic Range:	-		On/Off, extreme backlight compensation (WDR x160)		
BLC:	On/ Off/ Area/ Level				
Digital Noise Reduction (DNR):	Off / On (Low/Middle/High/User)				
Digital Image Stabilization (DIS):	Off/On				
Additional Features:	Digital Zoom, PIP, H/V Reverse, Positive/Negative inversion				
Digital Zoom:	Off/1 - 10x				
Reverse:	Off/ H-REV/ V-REV/ HV-REV/ POSITIV/ NEGATIV				
Intelligent Video Analytics:	Tracking/Detection				
OSD:	Yes, EN/FR/DE/SP/IT				
Camera ID:	54 character, 2 lines				
White Balance:	ATW-1/ATW-2/AWC/Manual				
IR LED:	-	-	24 pcs.	-	24 pcs.
Optical Wavelength:	-	-	850 nm	-	850 nm
Max. IR Distance:	-	-	15/25 m (according to scene reflection)	-	25 m (according to scene reflection)
Remote Control:	CCVC, data on coax cable				
Video Outputs:	1 CVBS 1 Vpp (BNC) & 1 test monitor out				
Accessories included:	Cable for service monitor with service remote control				
Humidity:	less than 90%				
Operating Temperature:	-10°C - +50°C				
Supply Voltage:	12 VDC/24 VAC				
Power Consumption:	1.7 W	-	1.7 W (4.1W LED on)	2.2 W	1.7W (4.1W LED on)
Dimensions:	Ø 122 x 95 mm				
Weight:	0.32 kg	-	0.5 kg	0.32 kg	0.5 kg

Analogue Vandal-Resistant Fixed Dome

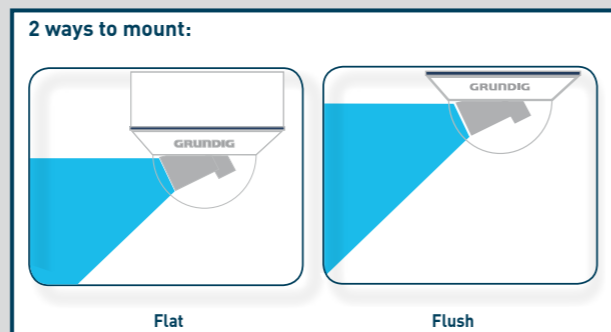


Highlights

External vandal-resistant fixed dome - excellent value	GCA-B3322V
True day/night external fixed dome with IR LEDs	GCA-B3326V

Key features and benefits

- 3 axis gimble with 2 mounting options: wall/ceiling flat and flush
- Cost-effective high quality vandal-resistant dome
- High Resolution up to 700 TVL
- Video enhancement functionality including Digital Noise Reduction, back light compensation and high light compensation
- High quality varifocal lens for easy installation



Order information

Item code	Brief description
GCA-B3323V	1/3" CCD fixed vandal-resistant dome with 2.8~10.5 mm varifocal lens, ICR
GCA-B3326V	1/3" CCD vandal-resistant fixed dome with 2.8~10.5 mm VF lens, ICR and 36 IR LEDs

	GCA-B3323V	GCA-B3326V
Image Sensor:	1/3" CCD Sony 960H Ex-view HAD II	
Scanning System:	PAL, 50Hz, 625L (V), 2:1 Inter Line Transfer	
Pixels - Effective:	976 (H) x 582 (V)	
Resolution:	650 (H) lines colour, 700 (H) lines b&w	
CoI/B&W:	Auto, IR-cut filter removable (ICR)	
Sensitivity Colour:	0.1 Lux (50IRE) @ F1.2	
Sensitivity B&W:	0.01 lux (50IRE) @ F1.2	0 Lux LED IR on
S/N Ratio:	>52dB (AGC off)	
Lens Drive Type:	DC Auto Iris	
Lens Focal Length:	2.8 - 10.5 mm	
Number of Privacy Zones:	4	
High Speed Shutter:	1/50 - 1/10.000 sec, auto	
BLC:	BLC / HLC / off	
AGC:	Off, On (x0.25/x0.5/x0.75/x1)	
Digital Noise Reduction (DNR):	Off, On 2D	
Additional Features:	H Reverse, High Light Compensation	
Motion Detection:	On/Off	
OSD:	Yes (DE,EN,ES,FR,RU,PT)	
Camera ID:	52 character, 2 lines	
White Balance:	ATW/PUSH/Anti CR/Manual/User 1/User 2	
Protection Rating:	IP66	
Video Outputs:	1 CVBS 1 Vpp (BNC) & 1 test monitor out	
IR LED:	-	36 pcs.
Optical Wavelength:	-	850 nm
Max. IR Distance:	-	15/30 m (according to scene reflection)
Humidity:	less than 90%	
Operating Temperature:	-10°C ~ +50°C	
Supply Voltage:	12 VDC/24 VAC	
Power Consumption:	2.4W	2.4W (5.8W LED on)
Dimensions:	Ø 152 x 110 mm	
Weight:	1.1 kg	

Grundig reserves the right to change specifications without notice

Analogue Vandal-Resistant Fixed Dome



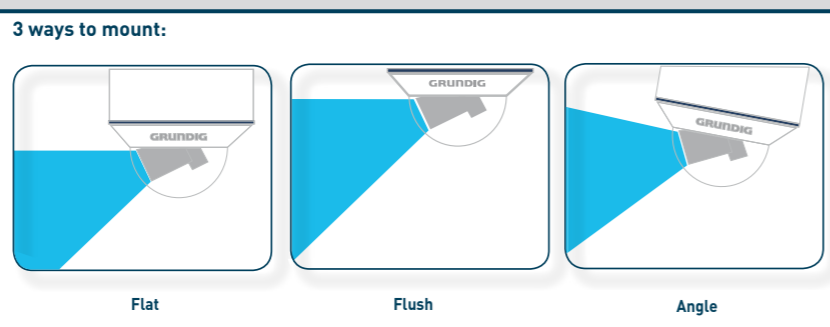
Highlights

True day/night WDR fixed dome with ICR and 36 IR LEDs

GCA-B0326V

Key features and benefits

- 3 axis gimble with 3 mounting options: wall/ceiling flat, wall/ceiling angle and flush
- Video enhancement functions including Digital Noise Reduction, Back light compensation and data item specification
- Remote control included for quick and simple installation
- High quality Tamron lens
- 8 polygon shaped privacy zones
- Certified for German Banks (UW Kassen)



Order information

Item code	Brief description
GCA-B0322V	1/3" CCD fixed dome with 2.8~10.5mm varifocal lens and software day/night
GCA-B1323V	1/3" CCD fixed dome with 2.8~10.5mm varifocal lens, ICR
GCA-B0323V	1/3" CCD fixed dome with 2.8~10.5mm varifocal lens, ICR and 36 IR LEDs
GCA-B0325V	1/3" CCD fixed dome with 2.8~10.5mm varifocal lens, ICR and WDR
GCA-B0326V	1/3" CCD fixed dome with 2.8~10.5mm varifocal lens, ICR, WDR and 36 IR LEDs

	GCA-B0322V	GCA-B1323V	GCA-B0323V	GCA-B0325V	GCA-B0326V
Image Sensor:	1/3" CCD (Sony Super HAD IT)			1/3" CCD (Sony PS Super HAD with WDR)	
Digital Signal Processor:	Motion Adaptive Digital Noise Reduction [DNR], On Screen Menu [OSD], Digital Image Stabilisation [DIS] control over coax and Privacy Zones				
Scanning System:	PAL, 50Hz, 625L [V], 2:1 Inter Line Transfer				
Image Size:	Pixel Total: 795 x 596, Pixel Effective: 752 x 582				
Resolution:	600 [H] lines	600[H] lines colour, 640 [H] lines b&w			
Co/B&W:	(Electrical) Colour B&W	On/Off/Auto/Ext, IR-cut filter removable [ICR]			
Sensitivity Colour:	0.4 lux @ 50IRE F1.2, 0,001 lux sens up 256x	0.4 Lux[50IRE] 0.0004 Lux [15IRE, Sense up x256]	0.4 lux @ 50IRE F1.2, 0,001 lux sens up 256x	0.4 Lux[50IRE] 0.0004 Lux [15IRE, Sense up x256]	
Sensitivity B&W:	-	0.04 Lux[50IRE] 0.00004 Lux [15IRE, sense up x256]	0 Lux LED IR on	0.04 lux @ 50IRE F1.2, 0.0001 lux sens up 256x	0 Lux LED IR on
S/N Ratio:	52 dB				
Lens Focal Length:	2.8 - 10.5 mm [TAMRON]				
Lens Drive Type:	Auto Iris [DC]				
Viewing Angle:	93.7°[H] - 28.3°[V]				
Sens Up:	Off - x256, auto				
Motion Detection:	On/ Off/ Sensitivity/ Area setting				
Number of Privacy Zones:	8 [polygonal method]				
High Speed Shutter:	1/50 - 1/10.000 sec, auto				
AGC:	Off/ On [Very LOW/ LOW/ Mid /High /Very High/ User/ Fix]				
BLC:	On/ Off/ Area/ Level			On/ Off/ Area/ Level/ WDR	
Digital Noise Reduction [DNR]:	Off / On [Low/Middle/High/User]				
Wide Dynamic Range:	-			On/Off, extreme backlight compensation [WDR x160]	
Digital Zoom:	Off/1 - 10x				
Digital Image Stabilization [DIS]:	Off/On				
Reverse:	Off/ H-REV/ V-REV/ HV-REV/ POSITIV/ NEGATIV				
PIP:	On/Off				
Intelligent Video Analytics:	Tracking/Detection				
OSD:	Yes, EN/FR/DE/SP/IT				
Camera ID:	54 character, 2 lines				
White Balance:	ATW-1/ATW-2/AWC/Manual				
IR LED:	-	36 pcs.	-	36 pcs.	
Remote Control:	CCVC, data on coax cable				
Optical Wavelength:	-	850 nm	-	850 nm 850 nm	
Max. IR Distance:	-	15/30 m [according to scene reflexion]	-	15/30 m [according to scene reflexion]	
Humidity:	less than 90%				
Protection Rating:	IP66				
Video Outputs:	1 CVBS 1 Vpp [BNC] & 1 test monitor out				
Accessories included:	Cable for service monitor with service remote control				
Operating Temperature:	-10°C - +50°C [-40°C - +50°C with GHT-24V]				
Supply Voltage:	12 VDC/24 VAC				
Power Consumption:	1.8 W	2.4 W	2.4 W [LED on]	2.4 W	2.4 W [5.8 W LED on]
Dimensions:	Ø 152 x 126 mm				
Weight:	1.12 kg				

Grundig reserves the right to change specifications without notice

www.grundig-cctv.com

Analogue Vandal-Resistant Pixim Dome



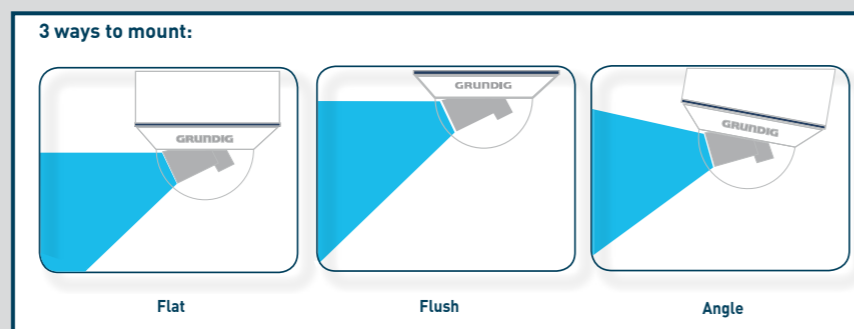
Highlights

Pixim Seawolf Sensor for difficult light situations GCA-B0324V

Key features and benefits

- 3 axis gimble with 3 mounting options: wall/ceiling flat, wall/ceiling angle and flush
- Colour 690 TVL / b & w 800 TVL horizontal resolution
- Image enhancement functionality including WDR and Digital Noise Reduction
- Day/night with removable IR cut filter
- External weatherproof housing (IP66)
- Tamron varifocal lens: f = 2.8 - 10.5 mm

Powered by
PIXIM[®]
SEAWOLF



Order information

Item code	Brief description
GCA-B0324V	1/3" CMOS Pixim dome with 2.8-10.5mm varifocal lens, ICR and WDR

	GCA-B0324V
Image Sensor:	1/3" CMOS DSP SEAWOLF Chipset (PIXIM)
Pixels - Effective:	768 x 540
Resolution:	690 (H) lines colour, 800 (H) lines b&w
Co/B&W:	Colour/B&W/Auto, IR-cut filter removable (ICR)
Sensitivity:	0.1 lux (Colour) F/1.2, 50 IRE / 0.01 lux (B&W) F/1.2, 50 IRE
S/N Ratio:	52 dB
Lens Focal Length:	2.8 - 10.5 mm (TAMRON)
Lens Drive Type:	Auto Iris (DC)
Viewing Angle:	93.7°(H) - 28.3°(V)
Shutter Speed:	1/25 sec to 1/30,720 sec
AGC:	Low, middle, high, custom
BLC:	On/Off + WDR (Low, normal, middle, high, custom)
Digital Noise Reduction (DNR):	Off/Low/Mid/High
OSD:	Yes, E/D/F/I
Wide Dynamic Range:	Typical: 102dB, Max: 120dB
White Balance:	ATW, AWB, Manual
Humidity:	less than 90%
Protection Rating:	IP66
Video Outputs:	1 CVBS, 1Vpp, BNC
Accessories included:	Cable for service monitor with service remote control
Operating Temperature:	-10°C ~ +50°C
Supply Voltage:	12 VDC/24 VAC
Power Consumption:	5.8 W
Dimensions:	Ø 152 x 126 mm
Weight:	1.12 kg

Grundig reserves the right to change specifications without notice

Analogue Outdoor Bullet with IR



Highlights

Outdoor Camera with IR brightness control	All
High quality 6-50mm lens for distant view applications	GCA-B1323T
Easy external focus & zoom adjustment	GCA-B0323T & GCA-B1323T

Key features and benefits

- Weatherproof housing (IP66)
- High resolution up to 600 TVL
- Video enhancement functions including Digital Noise Reduction, Back light compensation and data item specification
- 8 polygon shaped privacy zones
- Remote control included for quick and simple installation
- Power input 24VAC /12VDC

Order information

Item code	Brief description
GCA-B2323T	1/3" CCD bullet camera with 2.8-11mm varifocal lens and 36 IR LEDs internal adjustment
GCA-B0323T	1/3" CCD bullet camera with 6-50mm varifocal lens and 48 IR LEDs external adjustment
GCA-B1323T	1/3" CCD bullet camera with 2.8-11mm varifocal lens and 36 IR LEDs external adjustment

	GCA-B0323T	GCA-B2323T	GCA-B1323T
Image Sensor:	1/3" CCD (Sony Super HAD IT)		
Digital Signal Processor:	Motion Adaptive Digital Noise Reduction (DNR), On Screen Menu (OSD), Digital Image Stabilisation (DIS) control over coax and Privacy Zones		
Scanning System:	PAL, 50Hz, 625L (V), 2:1 Inter Line Transfer		
Image Size:	Pixel Total: 795 x 596, Pixel Effective: 752 x 582		
Resolution:	600(H) lines colour, 640 (H) lines b&w		
Co/B&W:	On/Off/Auto/Ext, IR-cut filter removable (ICR)		
Sensitivity Colour:	0.4 Lux(50IRE) 0.0004 Lux (15IRE, Sense up x256)	0.4 Lux(50IRE) 0.001 Lux (15IRE, Sense up x256)	
Sensitivity B&W:	0 Lux LED IR on		
S/N Ratio:	52 dB		
Lens Drive Type:	Auto Iris (DC)		
Lens Focal Length:	2.8 - 11 mm		6 - 50 mm
Adjustment zoom and focus:	Internal	External	
Sens Up:	Off - x256, auto		
Motion Detection:	On/ Off/ Sensitivity/ Area setting		
Number of Privacy Zones:	8 (polygonal method)		
High Speed Shutter:	1/50 - 1/10.000 sec, auto		
AGC:	Off/ On (Very LOW/ LOW/ Mid /High /Very High/ User/ Fix)		
BLC:	On/ Off/ Area/ Level		
Digital Noise Reduction (DNR):	Off / On (Low/Middle/High/User)		
Digital Image Stabilization (DIS):	Off/On		
Digital Zoom:	Off/1 - 10x		
Reverse:	Off/ H-REV/ V-REV/ HV-REV/ POSITIV/ NEGATIV		
Additional Features:	Digital Zoom, PIP, H/V Reverse, Positive/Negative inversion		
Intelligent Video Analytics:	Tracking/Detection		
OSD:	Yes, EN/FR/DE/SP/IT		
Camera ID:	54 character, 2 lines		
White Balance:	ATW-1/ATW-2/AWC/Manual		
IR LED:	36 pcs.	48 pcs.	
Optical Wavelength:	850 nm		
Max. IR Distance:	30/45 m (according to scene reflexion)		45/70 m (according to scene reflexion)
Protection Rating:	IP66		
Remote Control:	CCVC, data on coax cable		
Video Outputs:	1 CVBS 1 Vpp (BNC) & 1 test monitor out		
Accessories included:	Cable for service monitor with service remote control		
Humidity:	less than 90%		
Operating Temperature:	-10°C - +50°C		
Supply Voltage:	12 VDC/24 VAC		
Power Consumption:	7.8 W (LED on)	9.6 W (LED on)	
Dimensions:	Ø 80 x 178 mm		
Weight:	1.14 kg		

Grundig reserves the right to change specifications without notice

www.grundig-cctv.com

Analogue Motor Dome Cameras



Highlights

36x external PTZ motor dome with extreme temperature operation (-45°C ~ +50°C)	GCA-C0245P
36x internal PTZ motor dome with ceiling bracket	GCA-C0345P

Key features and benefits

- 650 TV Lines resolution
- Video enhancement functions including WDR, Digital Noise Reduction, Back light compensation, true day/night mode with removable IR cut filter
- 12x and 36x auto focus zoom options
- 360° continuous rotation
- Extended tilt range -10° ~ 190°
- Privacy mask function with 16 zones
- RS 485 multi-protocol support
- Comprehensive range of mounting options

Order information

Item code	Brief description
GCA-C0335P	Internal motor dome with 12x optical zoom, ICR and WDR
GCA-C0345P	Internal motor dome with 36x optical zoom, ICR and WDR
GCA-C0245P	External motor dome with 36x optical zoom, ICR and WDR

	GCA-C0335P	GCA-C0345P	GCA-C0245P
Image Sensor:	1/4" CCD [Super HAD 2 CCD]		
CoI/B&W:	On/Off/Auto, IR-cut filter removable [ICR]		
Pixels - Total:	976x582 (570k)		
Resolution:	650[H] lines		
Sensitivity:	0.1 lux (Colour) / 0.01 lux (B&W)		
Focal Length:	3.8 - 45.6 mm	3.4 - 122.4 mm	
Aperture Ratio:	F 1.6 - C		
Zoom Ratio:	x 12	x 36	
Digital Zoom:	Off/1 - 12x		
Lens Drive Type:	Auto Iris [DC]		
BLC:	On/Off		
WDR:	On/Off		
White Balance:	Auto / Manual		
Camera ID:	20 character		
Number of Privacy Zones:	16		
Pan Speed:	Manual: 1°/s - 80°/s, Preset: 400°/s (max.)	Manual: 0.5°/s - 90°/s, Preset: 400°/s (max.)	
Tilt Speed:	Manual: 0.5°/s - 90°/s, Preset: 400°/s (max.)		
Range Panning:	360° endless		
Range Tilting:	-10° ~ 190°		
Number of Preset:	256		
Number of Pattern:	8		
OSD:	Yes		
Alarm Inputs:	8		
Alarm Outputs:	1		
Regulation:	CE, FCC, RoHS Compliant		
Operating Temperature:	0°C ~ +40°C		
Humidity:	less than 90%		
Supply Voltage:	24 VAC, 50/60Hz		
Power Consumption	14 W	20 W	65 W
Weight	1.2 kg	1.6 kg	2.6 kg
Dimensions (W x H x D)	ø131 x 200 mm	ø131 x 226 mm	ø190 x 302,5 mm

Grundig reserves the right to change specifications without notice



Grundig Analogue DVR

Digital video recording is at the core of all surveillance systems

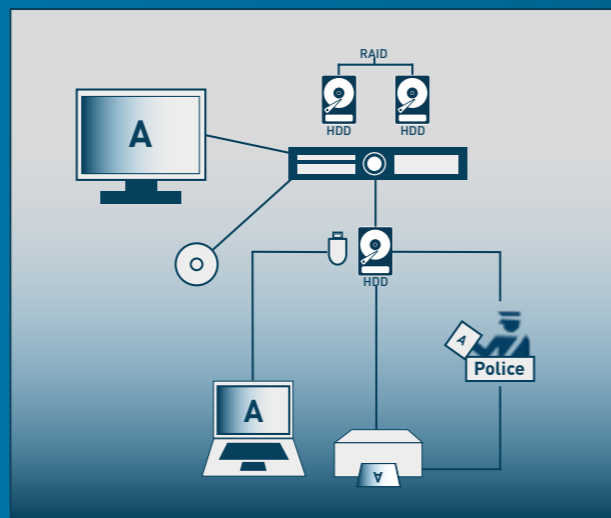
It is essential that a DVR is reliable, easily installed and controlled and meets all site application needs. The Grundig DVR range has been designed to offer outstanding functionality, any time and any where.

The range includes 8, 16 and 32 channel models; all equipped with a DVD-RW drive and two USB ports for back-up purposes. Their advanced functionality makes site operation and management straightforward.

Comprehensive back-up options and mirror mode

Grundig DVRs have a wide range of back-up options. Several models are RAID storage compatible. Up to four SATA or a single eSATA hard drive can be installed for duplicate, Mirror Mode storage. Additionally, the GDS-R04A can be added to the DVR to increase storage up to 32TB.

External hard drives can be connected to the Grundig DVR using either of the two front-mounted USB ports. The DVR will automatically monitor hard drive status and send email alerts should any of its hard drives experience problems.

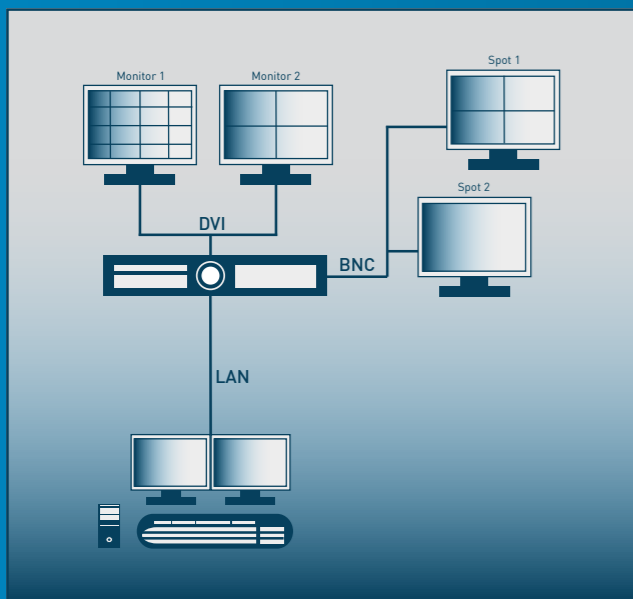


Multi-monitor support & advanced user management

Grundig DVRs support three monitors each or, in the case of the GDV-B8832A and GDV-C4416A DVRs, up to four monitors each (2 x DVI and 2 x BNC). This enables unprecedented system design flexibility with live viewing of up to 128 video channels simultaneously.

Customised access profiles can be set-up for each individual system user. The viewing of specific cameras within a system can be prevented and access to back-up and playback functionality restricted. Each user profile can be set-up quickly and efficiently by the system administrator.

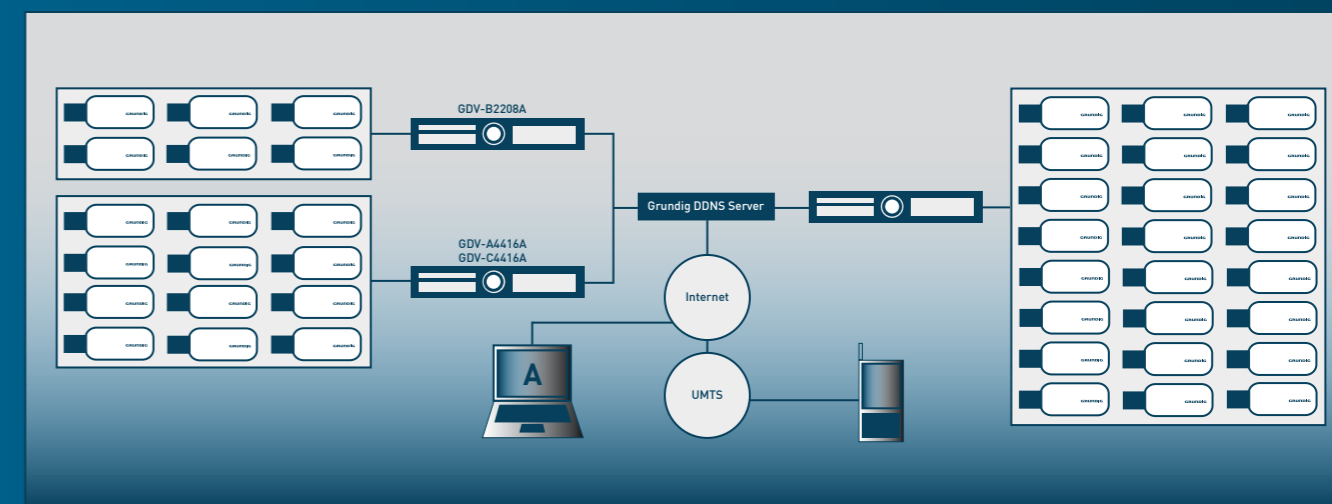
Grundig Control Centre Software enables up to 64 different video channels to be displayed on each of the two monitors simultaneously, creating a 128 channel system. Alternatively, one monitor can be used for live video and one for a system overview map or administration.



Real-time recording

Grundig DVRs are designed for real-time recording on all channels simultaneously, ensuring no critical data is missed, lost or impossible to see.

Depending on the model, Grundig DVRs will support up to 4 CIF resolution on every channel (GDV-C4416A), whilst delivering outstanding image quality. The combination of up to 8 Terabyte of internal hard drive (1 TB standard equipment) and the use of efficient H.264 image compression technology ensures that Grundig DVRs always have enough memory available, whatever the application.



Remote monitoring using the Grundig Control Centre and Mobile Viewer

The Grundig Control Centre and Mobile Viewer offers unlimited, 24 hour, access to each system DVR. Remote facilities include live monitoring and playback over the internet, using the Internet Explorer compatible Grundig Web-viewer. Most other commonly available JavaScript web browsers can also be used for live DVR access, regardless of the PC operating system used.

The Grundig Mobile Viewer allows DVR surveillance video to be viewed via any web-enabled mobile phone.

Grundig Control Software allows an entire surveillance system to be controlled from a PC. The surveillance system can be scaled up to include as many cameras as required, in DVR modules of 8, 16 and 32 channels. However large the system, it can still be controlled via a PC. Grundig products can be used to create a bespoke security system of any size, with PC control. Further cameras can be added as the system expands.

Analogue DVR



Highlights

Extra data protection with internal RAID level 1 support	GDV-C4416A & GDV-B8832A
32 Channel live view on up to 4 monitors	GDV-B8832A
16 channel D1, high-quality, real-time recording at 25fps	GDV-C4416A

Key features and benefits

- Full DVR Range 4, 8, 16 & 32 Channel
- Advanced H.264 compression for optimum storage utilization
- Compatible with Grundig Control Centre Software
- Advanced user management (including channel covering)
- Comprehensive search functions (time, calendar, event, thumbnail, motion area)
- Live view access for Smart Phones
- Alarm notification via email, Twitter, FTP, relay or buzzer
- French law compliant (August 2007)
- Supports up to 32TB using GDS-R04A

Order information

Item code	Brief description
GDV-C1104A	4 channel stand alone DVR with DVD-RW and 1TB HDD
GDV-B2208A	8 channel stand alone DVR with DVD-RW and 1TB HDD
GDV-A4416A	16 channel stand alone DVR with DVD-RW and 1TB HDD
GDV-B8832A	32 channel stand alone DVR with DVD-RW and 1TB HDD
GDV-C4416A	16 channel stand alone DVR with DVD-RW and 1TB HDD

	GDV-C1104A	GDV-B2208A	GDV-A4416A	GDV-C4416A	GDV-B8832A
Operating System:	Embedded OS				
Video Inputs:	4 CH Composite, BNC, Looped	8 CH Composite, BNC, Looped	16 CH Composite, BNC, Looped	16 CH Composite, BNC, Looped	32 CH Composite, BNC
Video Outputs:	2 CVBS (1 Main, 1 Spot), 1 DVI (HDMI/VGA compatible)			4 CVBS (4 Main) incl. 2 DVI (HDMI/VGA compatible)	
Basic Internal Storage:	1 TB				
Storage Max. Expansion:	6 TB (2x2TB SATA and 1x2TB eSATA)			10 TB (4x2TB SATA and 1x2TB eSATA)	
RAID:	-			Normal, RAID 1	
Video Compression:	H.264, JPEG				
Recording Resolution:	Full D1 (704x576), Half D1 (704x288), CIF (352x288)				
Recording Speed:	100fps (352x288), 100fps (704x288), 100fps (704x576)	200fps (352x288), 200fps (704x288), 100fps (704x576)	400fps (352x288), 200fps (704x288), 100fps (704x576)	400fps (352x288), 400fps (704x288), 400fps (704x576)	800fps (352x288), 800fps (704x288), 400fps (704x576)
Recording Mode:	Continuous, Event Alarm, Motion, Video Loss, Schedule, Manual				
Display Resolution:	max. 1920 x 1080				
Display Speed:	100 fps	200 fps	400 fps	400 fps	800 fps
Auto Switching:	0, 3, 5, 10, 20, 30 sec, Alarm Pop Up or Manual			0, 3, 5, 10, 20, 30 sec, Alarm Pop Up or Manual, Multi Channel Views	
Internal Backup:	Built in DVD-RW drive				
External Backup:	USB HDD, USB Memory, DVD-R, Network, eSATA				
Search Mode:	Date/Time, Event Alarm (Motion, Video Loss,...), Thumbnail				
Motion Detection:	On/ Off/ Area Setting				
Event Source:	Motion, Alarm, Text, Video Loss, System				
Event Action:	Pop-Up, Relay, E-Mail, FTP, Network, Buzzer, PTZ Preset				
Audio Inputs:	4 CH, RCA			16ch: 4 RCA built-in, 12 D-sub (cable optional)	
Audio Outputs:	1 CH, RCA				
Alarm Inputs:	4 contact input N/O or N/C	8 contact input N/O or N/C	16 contact input N/O or N/C		
Alarm Outputs:	2 Relay			4 Relay	
Interfaces:	2 port RS485, 1 port RS232, System Keyboard, 1 Ethernet and 2 USB 2.0 ports			2 port RS485, 1 port RS232, System Keyboard, 1 NAS, 1 Ethernet and 2 USB 2.0 ports	
ATM/POS:	Supports up to 16 ATM/POS with VSI-Pro Hydra Modules				
Time Setting:	Setting by NTP Server local or internet				
Video Streaming:	Versatile Triple Streaming (Dual H.264 + single JPEG)				
Multiplex Function:	Pentaplex				
Network:	Ethernet, 10/100 Base-T, ADSL Static IP, ADSL Dynamic IP(PPPoE), Cable Network (Dynamic IP)			Ethernet, 10/100 Base-T for PC client, 1000 Base-T for storage, ADSL Static IP, ADSL Dynamic IP(PPPoE), Cable Network (Dynamic IP)	
Client software:	Windows (XP, Vista, 7), Web Viewer: IE, Firefox, Safari, Chrome; Mobile: iPhone (OS4), Blackberry, Android, Windows Mobile, Symbian				
Supply Voltage:	110 - 240 VAC/50Hz				
Power Consumption:	75 W			85 W	
Dimensions:	445 x 88 x 418 mm				
Weight:	8.2 kg			8.9 kg	

Grundig reserves the right to change specifications without notice



Monitors with LED back light technology

The professional, flat-screen CCTV monitors from Grundig have been developed specifically for video surveillance applications. They use LED backlight technology to produce high-contrast images with accurate colour rendition. They are designed for 24/7 operation and have a low power consumption, which keeps running costs and their environmental impact to a minimum.

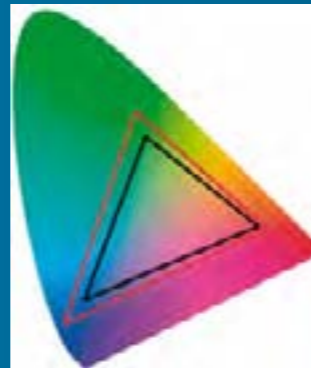
LED backlight technology

Grundig uses LED backlighting for their TFT flat-screen monitor panels. LED backlight technology has many advantages over traditional CCFL backlighting:

Natural colours and higher contrast

LED backlight monitors have a higher gamut level than CCFL monitors. This ability to show a wider colour spectrum results in a more accurate, natural and realistic display.

The white parts of an image produced by an LED backlight monitor are brighter than CCFL and the images are updated faster. Together, these factors help to increase display contrast.



Gamut: Black: CCFL, Red: LED



CCFL back light technology monitor



Grundig LED Backlight monitor

Digital Image Enhancement Technologies

Grundig monitors use comb filtering to improve the display quality of analogue signals on the digital TFT panel. The blocking and ghosting effects caused by digitalization are minimized. Grundig monitors also contain built-in de-interlacing to maximize display quality. This is Compatible with interlace and progressive scan cameras.



Interlaced



De-interlaced



With 3D - Filter



Without 3D - Filter

Low power consumption and extended life combine to reduce environmental impact

LED backlight monitors use around 35% less power than CCFL monitors. This reduces their running costs.

LED backlight monitors last longer than CCFL, so are replaced less frequently. Mean Time Before Failure (MTBF) results demonstrate that LED life is up to 100,000 hours - double that of CCFL.

Twice the lifetime

LED backlight monitors have twice the lifetime of CCFL monitors

MTBF CCFL:		50.000 hours
MTBF LED:		100.000 hours



Standard Glass



Anti-Reflection Coating

Toughened, Non-Reflective Glass

Grundig monitors have scratch-resistant glass with a special anti-reflection coating. Disturbing reflections from artificial lights are minimised and don't disturb you from the important video content. The panel is save behind the glass, to ensure a long lifetime and no scratches from the daily use.

Flexible design

All Grundig monitors are VESA mount compatible. A wide range of video, data and power connections maximises application flexibility. Grundig monitors can be installed in almost any location.



Multiple Video Connections



VESA Mounting

Monitors



Highlights

Cost saving: low energy consumption & high MTBF (100,000 hours)

GML-1730M, GML-1930M & GML-1931M

Small and versatile with multiple video connections (BNC IN/OUT and VGA)

GMT-1031P

Key features and benefits All

- LED backlight illumination
- Outstanding image quality with high contrast, natural colours
- Scratch-resistant glass with an anti-reflection coating

Key features and benefits

GML-1730M, GML-1930M & GML-1931M

- Image enhancement 3D comb filter, digital noise reduction and de-interlacing
- Picture in picture and picture by picture options

Order information

Item code	Brief description
GMT-1031P	27cm (10.4") LCD/TFT LED backlight monitor
GML-1730M	43cm (17") LCD/TFT LED backlight monitor
GML-1930M	48cm (19") LCD/TFT LED backlight monitor
GML-1931M	Metal cased, 48cm (19") LCD/TFT LED backlight monitor

	GMT-1031P	GML-1730M	GML-1930M	GML-1931M
LCD Panel size:	10" Diagonal AM-TFT LED Backlight	17" Diagonal AM-TFT LED Backlight	19" Diagonal AM-TFT LED Backlight	
Pixels - Total:	640 (H) x 480 (V)	1280(H) x 1024(V)		
Pixel Pitch:	0.33 mm(H) x 0.33 mm(V)	0.264 mm(H) x 0.264 mm(V)		
Resolution:	640 x 480 pixel, 400(H) TV Lines	1280 x 1024 pixel, 650(H) TV Lines		
Video Standard:	PAL/NTSC			
Aspect Ratio:	4:3			
Video Inputs:	1 CH Composite, BNC, Looped / 1 CH VGA	2 CH Composite, BNC, Looped 1 HDMI, 1 CH VGA		
Audio Inputs:	-	3 CH (stereo), 1xHDMI, 1xCinch (L/R), 1xTRS Connector		
Built In speaker	-	2 x 1.5W		
Viewing Angle:	140° (H) - 110°(V)	170°(H) - 160°(V)		
Contrast ratio:	300:1	10.000:1		
Brightness:	350 cd/m ²	300 cd/m ²		
Response Time:	8 ms	5 ms		
Number of Colours:	16.7 million			
Display protection:	Tempered Glass			
Comb Filter	2D	3D		
PIP:	-	On/Off		
PBP:	-	On/Off		
Display Mode:	AV (BNC), VGA	AV1 (BNC), AV2 (BNC), VGA & HDMI		
OSD:	Multilanguage			
Operating Temperature:	0°C - +40°C			
Accessories included:	Table stand bracket & PSU & VGA cable	Table stand bracket & PSU & VGA cable & Remote Control		
MTBF at 25° C:	> 30,000 hours	> 100,000 hours		
Vesa Mount:	75 x 75 mm			
Supply Voltage:	12 VDC			
Power Consumption:	<20 W	15 W		
Dimensions:	268 x 214 x 41.5 mm	385 x 384 x 165 mm	415,5 x 359 x 72 mm	
Weight:	1.71 kg	3.4 kg	3.5 kg	7.6 kg

Monitor Accessories

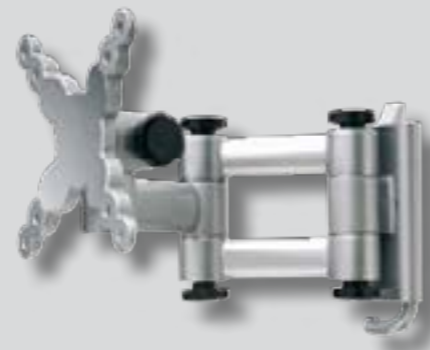
Monitor bracket 13 ~27" with 18kg load

Article	GBR-M31554
Recommended Monitor Size	33 cm ~ 68 cm (13" ~ 27")
Compatible with	GMT-1031P, GML-1730M, GML-1930M, GML-1931M
Vesa Mount	Black
Tilt Range	75 x 23 x 102 mm
Load Max.	18 kg
Wall Distance	72 mm
Colour	Silver
Dimensions	120 x 170 x 75 mm
Weight	0,56 kg



Monitor Bracket 13 ~27" max. 18kg load

Article	GBR-M31555
Recommended Monitor Size	33 cm ~ 68 cm (13" ~ 27")
Compatible with	GMT-1031P, GML-1730M, GML-1930M, GML-1931M
Vesa Mount	75/100 mm
Load Max.	18 kg
Colour	Silver
Dimensions	120 x 170 x 260 mm
Weight	1.4 kg



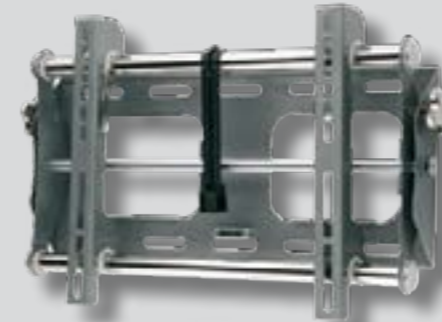
Monitor bracket 17 ~32" with 25kg load

Article	GBR-M31556
Recommended Monitor Size	43 cm ~ 81 cm (17" ~ 32")
Compatible with	GMT-1031P, GML-1730M, GML-1930M, GML-1931M
Vesa Mount	75 ~ 200 mm
Load Max.	25 kg
Colour	Silver
Dimensions	230 x 240 x 350 mm
Weight	3.4 kg



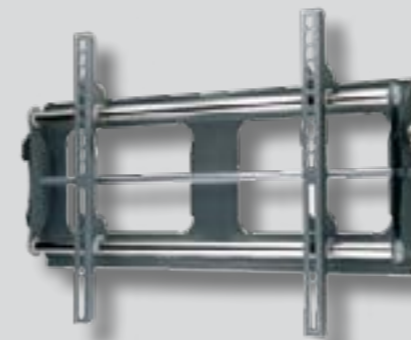
Monitor bracket 23 ~37" with 40kg load

Article	GBR-M31560
Recommended Monitor Size	58 cm ~ 94 cm (23" ~ 37")
Load Max.	40 kg
Colour	Silver
Dimensions	570 x 350 x 90 mm
Weight	6.3 kg



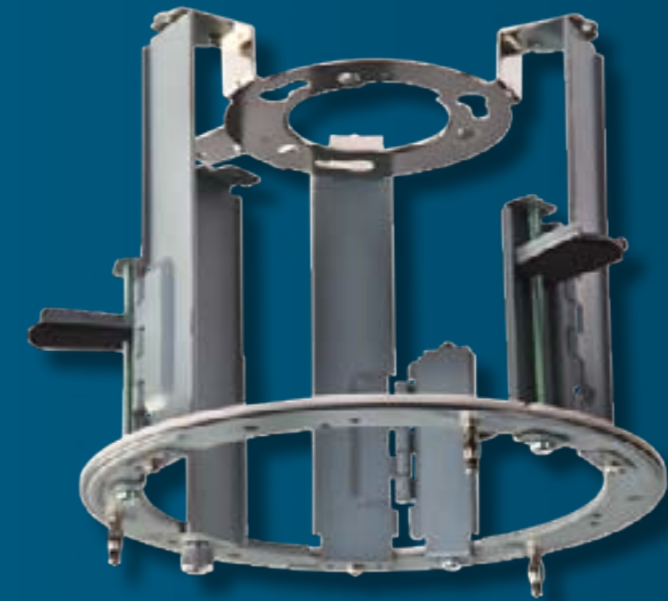
Monitor bracket 37 ~50" with 75kg load

Article	GBR-M31561
Recommended Monitor Size	94 cm ~ 127 cm (37" ~ 50")
Load Max.	75 kg
Colour	Silver
Dimensions	800 x 530 x 100 mm
Weight	9.1 kg



Order information

Item code	Brief description
GBR-M31554	Monitor bracket 13~27" maximum with 18kg load
GBR-M31555	Monitor bracket 13~27" maximum with 18kg load
GBR-M31556	Monitor bracket 17~32" maximum with 25kg load
GBR-M31560	Monitor bracket 23~37" maximum with 40kg load
GBR-M31561	Monitor bracket 37~50" maximum with 75kg load



Accessories

Connecting everything

Grundig supports its CCTV product portfolio with a comprehensive range of accessories. Grundig has a solution for every application.

Accessories

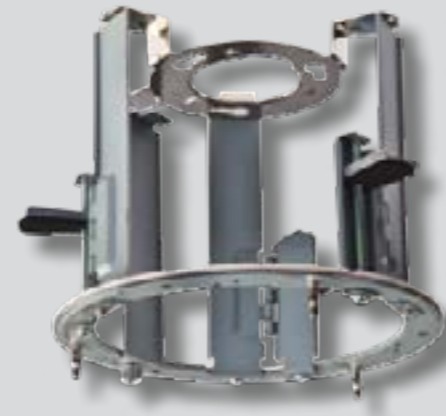
False ceiling mount adapter

Article	GBR-IC01
Compatible with	GCI-C0735P, GCA-C0335P
Material	Metal
Dimensions	Ø 179 x 132 mm
Weight	0.4 kg



False ceiling mount adapter

Article	GBR-IC03
Compatible with	GCA-C0345P
Material	Metal
Dimensions	Ø 179 x 155 mm
Weight	0.47 kg



Adapter for Wall- and Pendant Mount bracket

Article	GBR-AM01
Compatible with	GCI-C0735P; GCA-0335P, GCA-C0345P
Material	Die Cast Aluminium
Dimensions	Ø 141 x 74 mm
Weight	0.5 kg



Hanging mount adapter for Pelco brackets with 1.5" NPT thread

Article	GBR-AM02
Compatible with	GBR-AM01, GHO-M018, GCI-C0745P, GCI-C0779P, GCI-C1779P, GCH-K0274P, GCA-C0245P
Material	Die cast aluminium
Dimensions	Ø 55 x 52 mm
Weight	0.12 kg



Pendant Mount Bracket

Article	GBR-CE01
Compatible with	GBR-AM01, GHO-M018, GCI-C0745P, GCI-C0779P, GCI-C1779P, GCH-K0274P, GCA-C0245P
Material	Steel
Dimensions	115 x 183 x 100 mm
Weight	2.2 kg



Order information

Item code	Brief description
GBR-IC01	False ceiling mount adapter for GCI-0735P and GCA-C0335P
GBR-IC03	False ceiling mount adapter for GCA-C0345P
GBR-AM01	Hanging mount adapter
GBR-AM02	Hanging mount adapter for Pelco brackets with 1.5" NPT thread
GBR-CE01	Pendant mount bracket

Accessories

Wall bracket

Article	GBR-WA02
Compatible with	GBR-AM01, GH0-M018, GBR-PM01, GBR-CM01, GCI-C0745P, GCI-C0779P, GCI-C1779P, GCH-K0274P, GCA-C0245P
Material	Die cast aluminium
Dimensions	104 x 127 x 184 mm
Weight	0.6 kg



Smoked bubble

Article	GAC-B0202A
Compatible with	GCA-C0345P
Material	Polycarbonate
Dimensions	Ø110 x 60 mm
Weight	0.062 kg



Pole mount bracket

Article	GBR-PM01
Compatible with	GBR-WA02
Material	Steel
Dimensions	270 x 170 x 60 mm
Weight	1 kg



Fan/Heater Kit

Article	GHT-24V
Suitable for	GCA-BxxxxV
Heater	Polycarbonate
Operation Temperature	24 VAC
24 VAC	11 W



Corner mount bracket

Article	GBR-CM01
Compatible with	GBR-WA02
Material	Steel
Dimensions	222 x 204 x 117mm
Weight	2 kg



Order information

Item code	Brief description
GBR-WA02	Wall bracket for speed domes
GBR-PM01	Pole mount adapter
GBR-CM01	Corner mount adapter
GAC-B0202A	Smoked dome cover for GCA-C0345P
GHT-24V	Fan/Heater Kit

Accessories

Wall bracket

Article	GBR-WA01
Compatible with	GCA-BxxxxV
Material	Die cast aluminium
Dimensions	168,5 x 152 x 152 mm
Weight	0.9 kg



Flate Base

Article	GBR-FB01
Compatible with	GCA-BxxxxV
Material	Die Cast Aluminium
Dimensions	Ø 152 X 40 mm
Weight	0,332 kg



Smoked Bubble

Article	GBR-VC01S
Compatible with	GCA-BxxxxV
Material	polycarbonate
Dimensions	Ø110 x 50 mm



Camera bracket

Article	GBR-WA03
Compatible with	GCA-BxxxxV
Material	Aluminium
Dimensions	90 x 160 mm
Weight	0,2 kg



Order information

Item code	Brief description
GBR-WA01	Wall bracket
GBR-VC01S	Smoked Bubble
GBR-WB01	Wedge base
GBR-FB01	Flate Base

Accessories



Keyboard controller for DVRs and speed domes

Article	GKB-A0110M
Compatible with	GDV-series DVRs, GRH-series DVRs, Analogue PTZ cameras
Serial Interface(s)	1x RS232 and 1x RS485
Protocol (DVR):	Grundig proprietary
Multi-Protocol (Camera)	Pelco-D, Pelco-P, Panasonic, Samsung, DM, SonyD70, VCL, MIKAMI, CBC, B01, B02, SonyD70_R, EZ, VC, LILIN
Baud Rate	1200 - 19200 Bps
Control	Up to 99 DVRs
LCD Panel Size	2 x 16 grey graphic LCD
Pan/Tilt Control	Pan (left/right), tilt (up/down)
Lens Control	Iris (Close/Open), Focus (Near/Far), Zoom (Tele/Wide)
PTZ Control	Presets, Cruise, Pattern, OSD control
DVR Control	RW, Stop, Play, FF, Rec, PTZ, Menu, Search, Backup, Monitors, etc.
Operating Temperature	-10°C ~ +50°C
Humidity	0 ~ 95%RH
Storage Temperature	-40°C ~ +70°C
Supply Voltage	12 VDC power adaptor included
Power Consumption	1.5 W
Dimensions	280 x 85 x 185 mm
Weight	2.5 kg



External DVR storage

Article	GDS-R04A
Compatible with	GDV-C4416A, GDV-B8832A, GRH-K1004A, GRH-K2108A
Operating System	Embedded Linux
Hard Disk Bay	4x Hot-Swap SATA bays
Storage Max. Expansion	8 TB
Recording Speed	10 MB/sec
RAID	Normal, RAID 1
Rack Mount	19" rack mounting brackets provided
Interfaces	RS-232, RJ45 (DVR connection), RJ45 (cascade)
Operating Temperature	5°C ~ +45°C
Power Consumption	<85 W
Dimensions	430 x 44 x 362mm
Weight	5.5 kg

Order information

Item code	Brief description
GKB-A0110M	System keyboard with LCD display
GDS-R04A	External storage for GDV-series DVR

Notes

German video security excellence

- by Grundig.



Grundig is a world class manufacturer of video surveillance. Industry expertise, leading technology, outstanding design and German build quality combine to produce exceptional security solutions.

For further information visit www.grundig-cctv.com



FOR A GOOD **REASON**
GRUNDIG



ASP AG
Advanced Security Products
Lüttringhauser Str. 9
42897 Remscheid
Germany

Tel +49(0)2191 374 98 83
Fax +49(0)3212 130 46 34
E-Mail info@grundig-cctv.com
Web www.grundig-cctv.com

